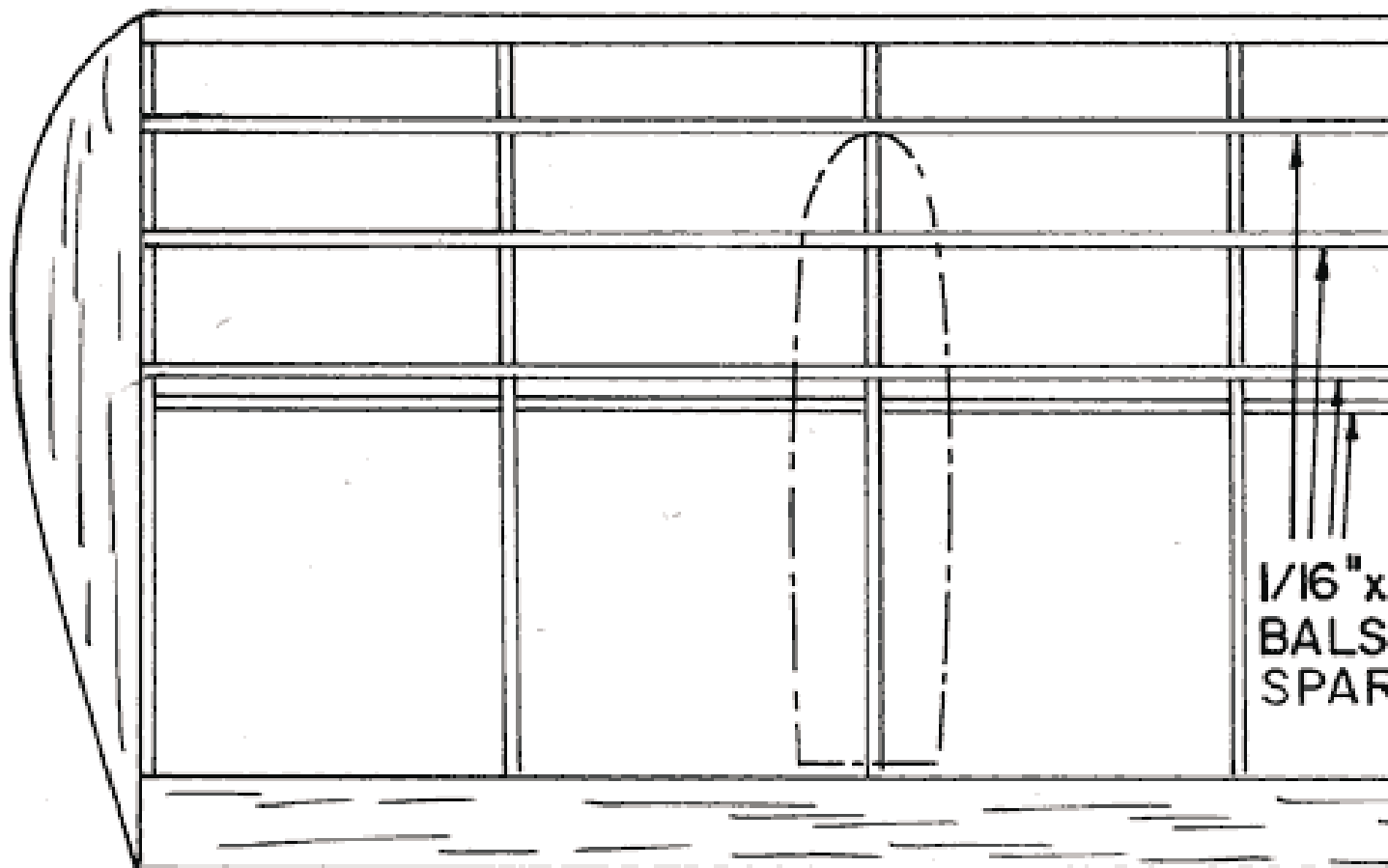


WING PL

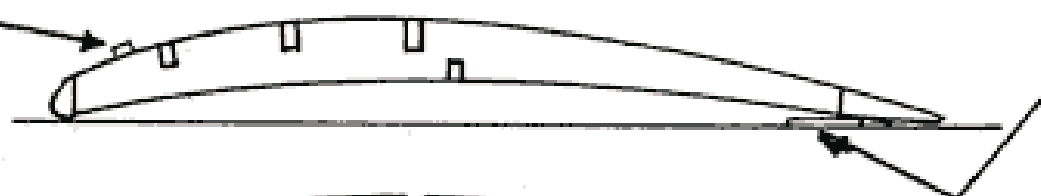


TURBULATOR STRIP
FULL SPAN

ASSEMBLY S


F-2T 

F-2B 



RIB PATTERN  1/16" BALS

F-1 

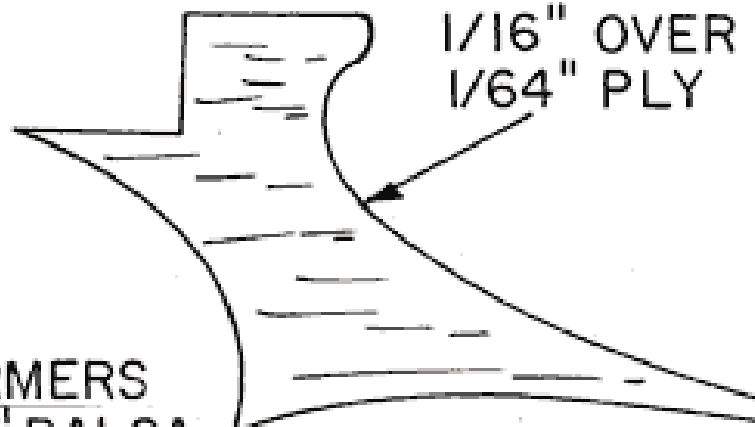
F-3T 

2 LAYERS OF
1/16" OVER
1/64" PLY

F-3 



F-6



F-3A 

F-4 

ALL FORMERS
ARE 1/16" Balsa

F-5B 

AN

Q

1/8" x 1/4"

1/8"
A
RS

SHIM

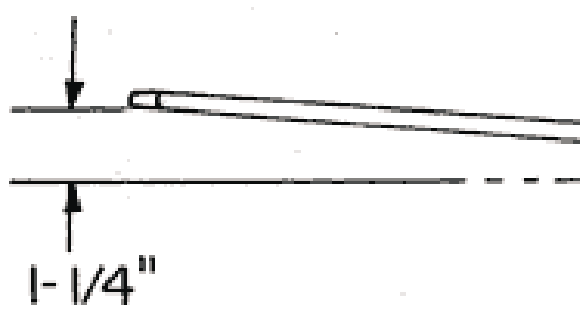
1/16" x 1/4" x 1" PLY
CROSS PIECE

1/32" BALSA SHEET
TOP ONLY

A SHEET (14)

OF

1/16" PLYWOOD



FLOAT

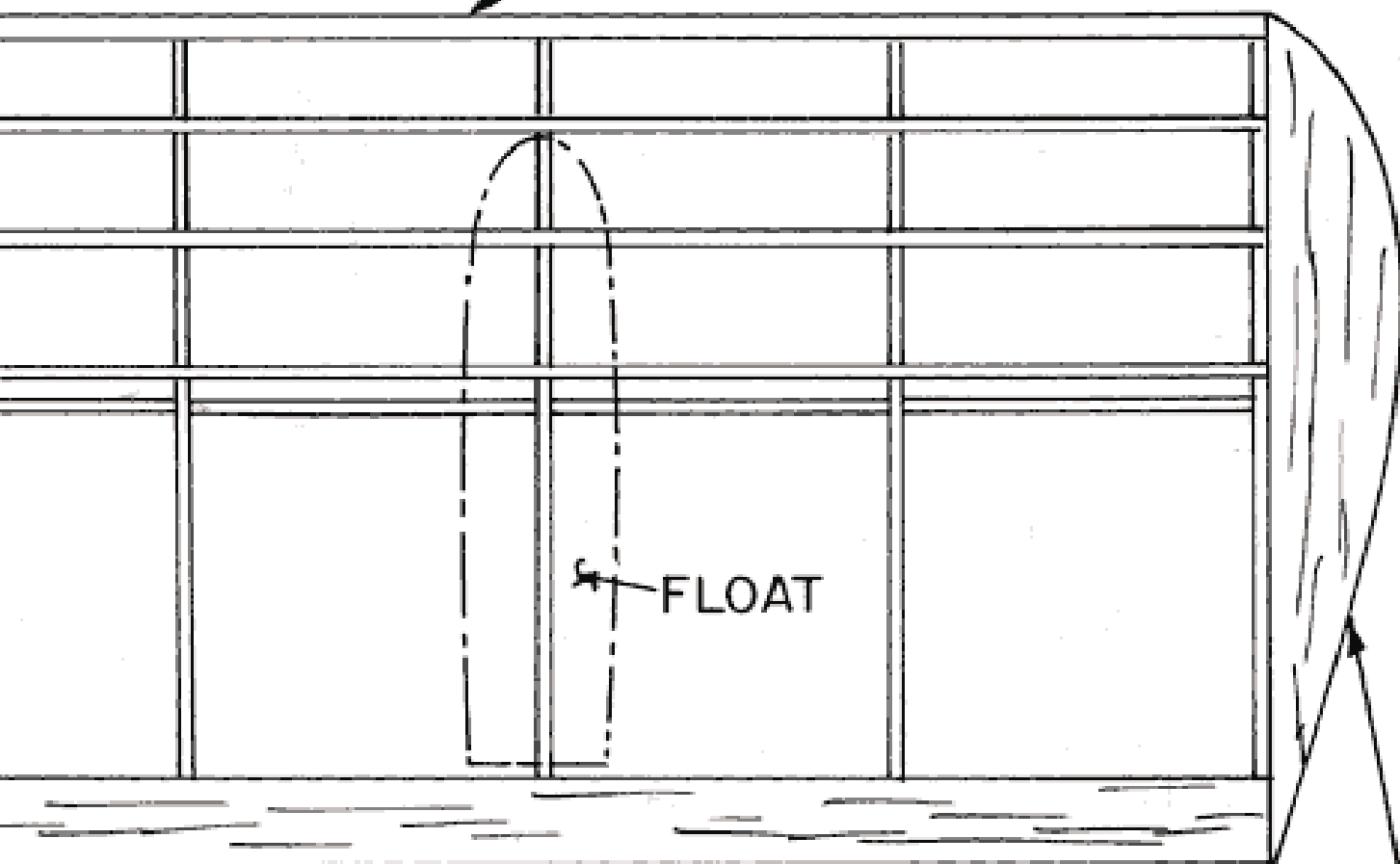


D-D

CARVE TIP
FLOATS F
LIGHT BA
BLOCK

1/16" SQ. BALSA

1/4" BALSA L. E.



1/8" x 3/8"
BALSA T. E.

SOFT BALSA BLOCK
WING TIPS



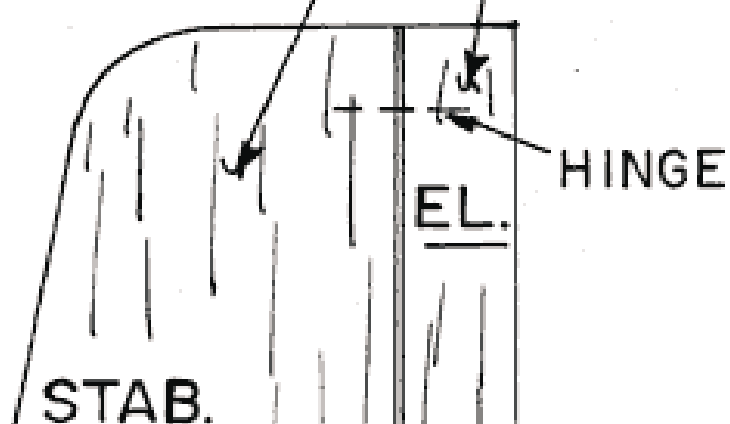
DIHEDRAL DETAIL

NOT TO SCALE

FROM
LSA

THIN PLASTIC

1/16" BALSA
SHEET



HINGE

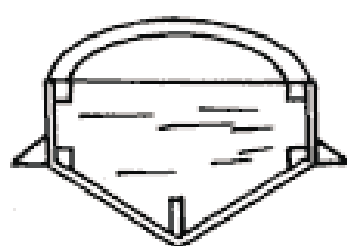
EL.

STAB.

F-3B



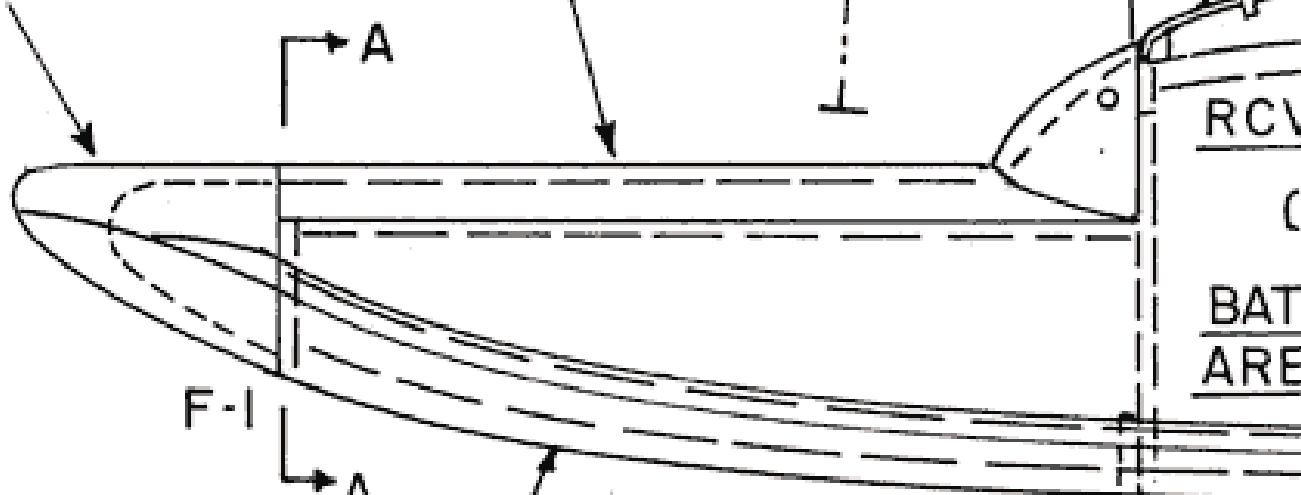
1/8" Balsa STRIPS



A - A

DC 5-2.4 MOTOR
WITH 4.2 - 1 GEARS
5-1/4" DIA. PROP
FROM PECK POLY-
MERS

HOLLOWED Balsa BLOCK



F-1

A

1/16" x 1/8" Balsa KEEL

F-2

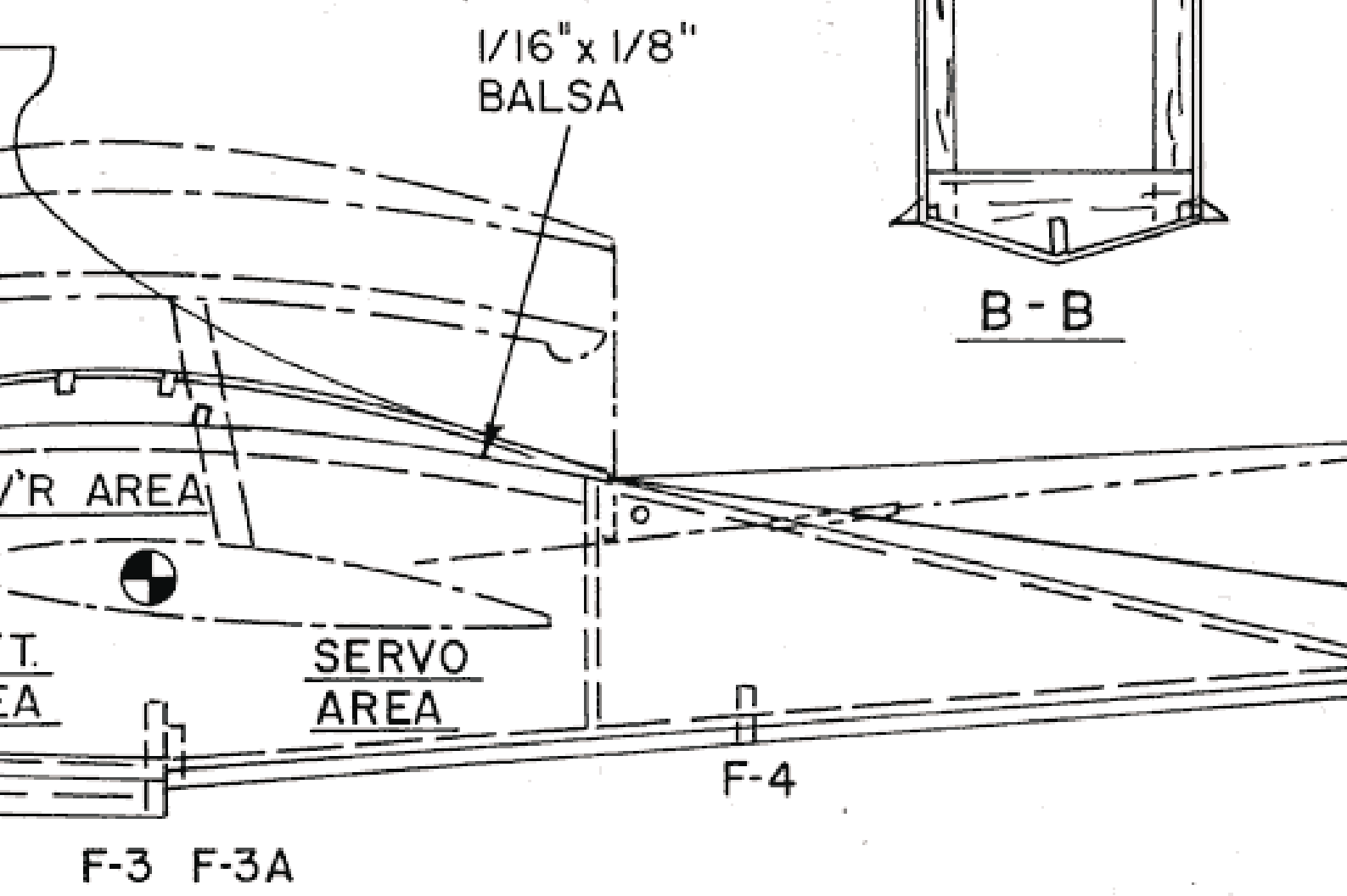
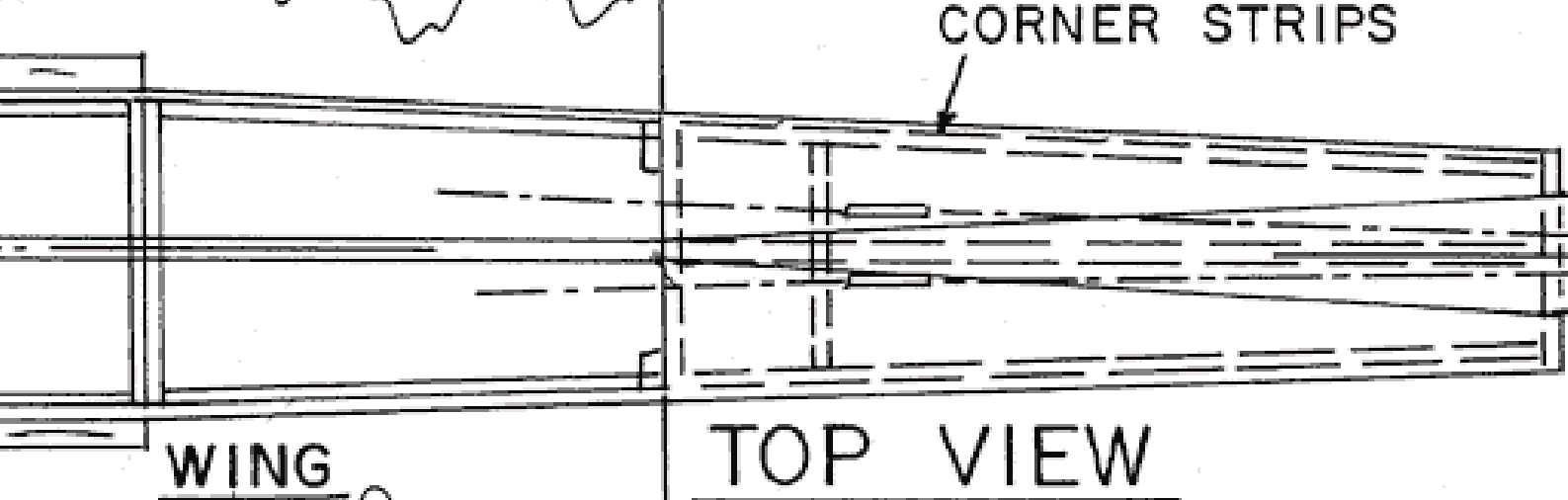
RCV

BAT

ARE

COVER BOTTOM FROM
STEP FORWARD WITH
LIGHT TISSUE

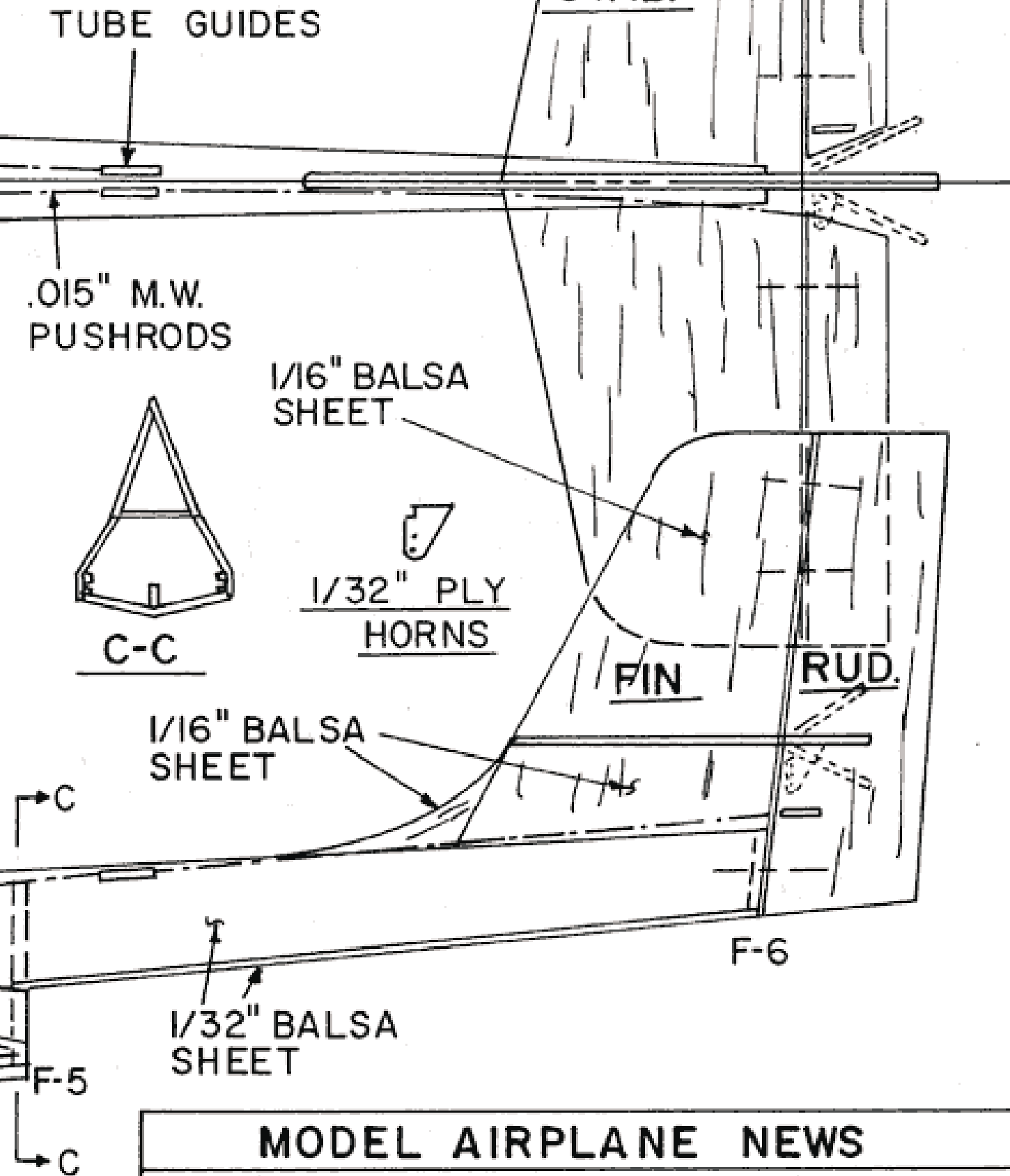
FUSELAGE



ALL HULL SHEET IS
1/32" Balsa

AGE SIDE VIEW





MODEL AIRPLANE NEWS

POND BABY

MICRO R/C SEAPLANE

DESIGNED & DRAWN BY DAVE ROBELEN

INKED PLAN BY JOE DEMARCO

ALL RIGHTS
RESERVED

SHEET
1 OF 1

FSP