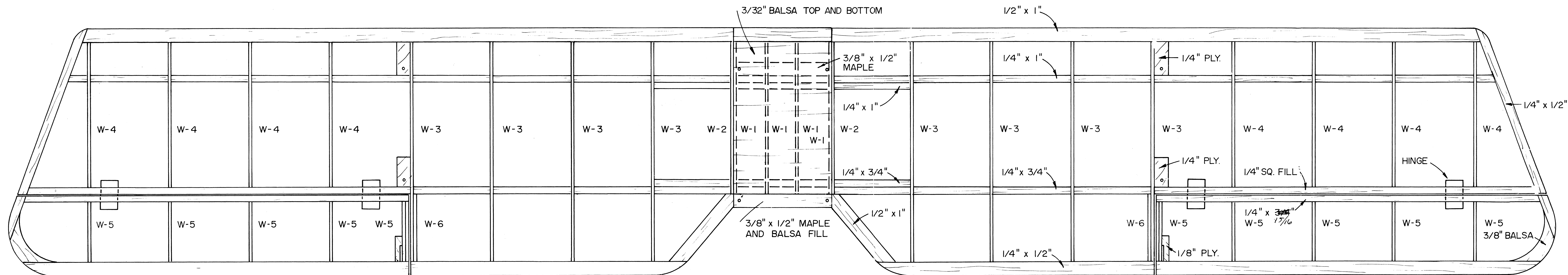
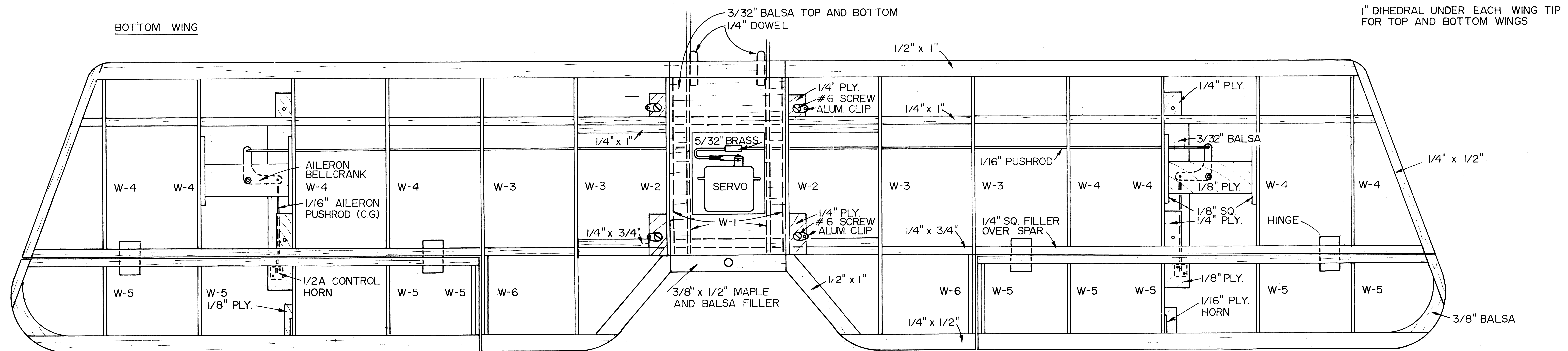




# TOP WING



# BOTTOM WING



1" DIHEDRAL UNDER EACH WING TIP  
FOR TOP AND BOTTOM WINGS

030 ALUMINUM CLIP  
1/8" DOWEL PIN

ALUMINUM  
HATCH  
COVER

SS-8  
FUEL  
TANK

F-5

1/4" x 3/4" SPRUCE CABANE STRUTS

#4 x 3/8" SM. SCREWS

THROTTLE PUSHROD

3/16" SIDE

1/16" PLY. DOUBLER

1/4" PLY. F-14

1/8" PLY.

CG. LG CLAMP

LG-1 & 3

LG-2

WRAP WITH COPPER  
WIRE AND SOLDER

3/16" WASHER

3/16" WASHER  
3/16" BRASS TUBE AXLE  
1/16" COTTER KEY

5" WMS. BROS. VINTAGE WHEELS

1/4" SQ. FILLER

HINGE

1/4" PLY.  
#6 x 1/2" SM. SCREW  
030 ALUMINUM CLIP

1/4" x 3/4" SPRUCE  
WING STRUTS

ALUMINUM CLIPS ARE  
EPOXIED INTO HACKSAWED  
SLOTS IN STRUTS AND  
PINNED WITH 1/8" DOWEL

1/4" PLY.

1/4" Balsa

1/4" PLY

1/4" PLY

1/16" PLY.

1/16" PUSHROD

WHEEL COLLAR

BELLCRANK

PUSHROD

CLEVIS

1/8" PLY.

1/2A CONTROL HORN

AILERON TRAVEL 5/8" IN EACH DIRECTION

LG-3

5/32" WIRE

LG-1

MAKE AXLE LONGE  
IF USING DIFFERENT  
WHEELS OR KEEPERS

BEND

LG-2

1/8" WIRE

MAKE ALL RIBS FROM 3/32" Balsa

W-3 (12)

W-4 (16)

W-6 (4)

W-5 (24)

W-2 (4)

W-1 (8)



© RCM ALL COMMERCIAL RIGHTS RESERVED

**GOLDEN OLDIE**

A VINTAGE SPORT BIPLANE  
DESIGNED AND DRAWN BY FRED REESE