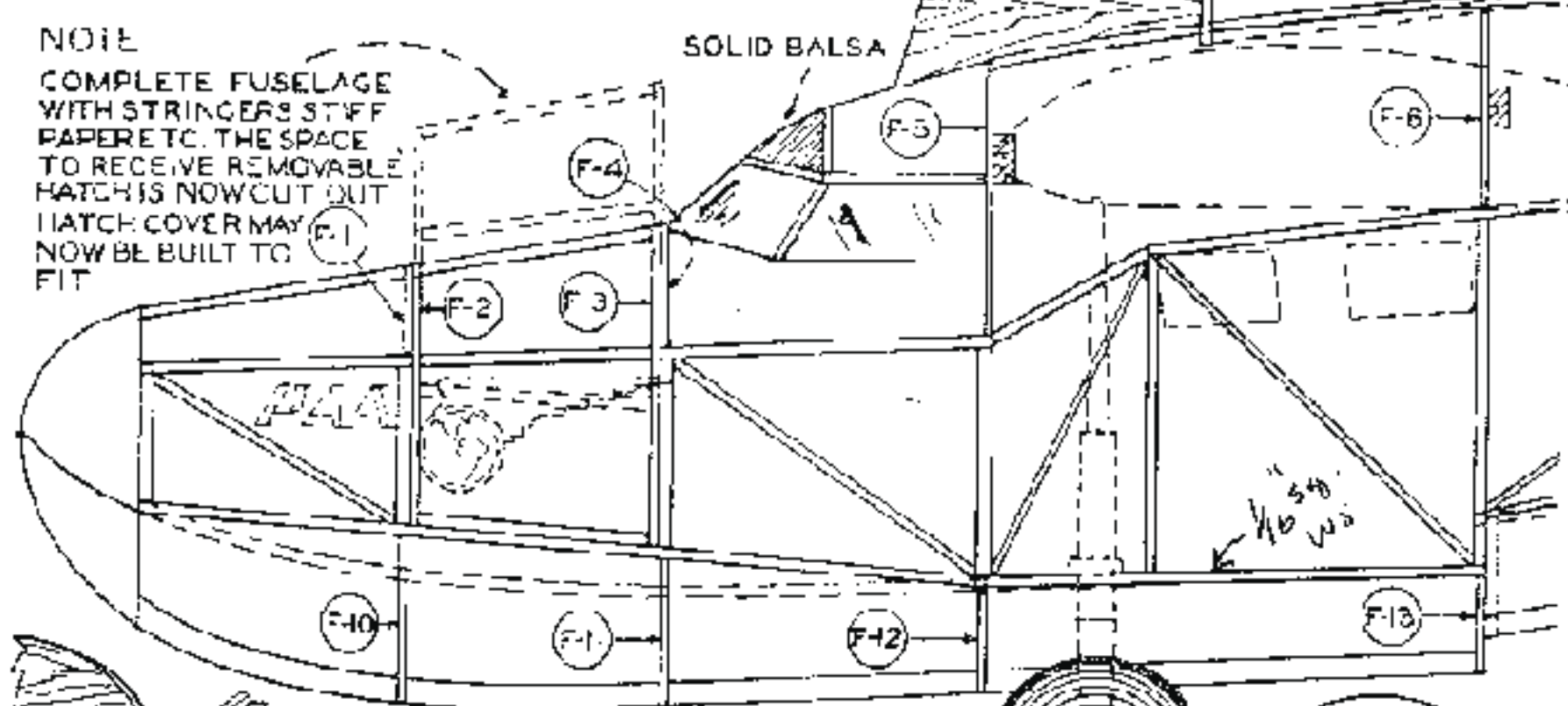
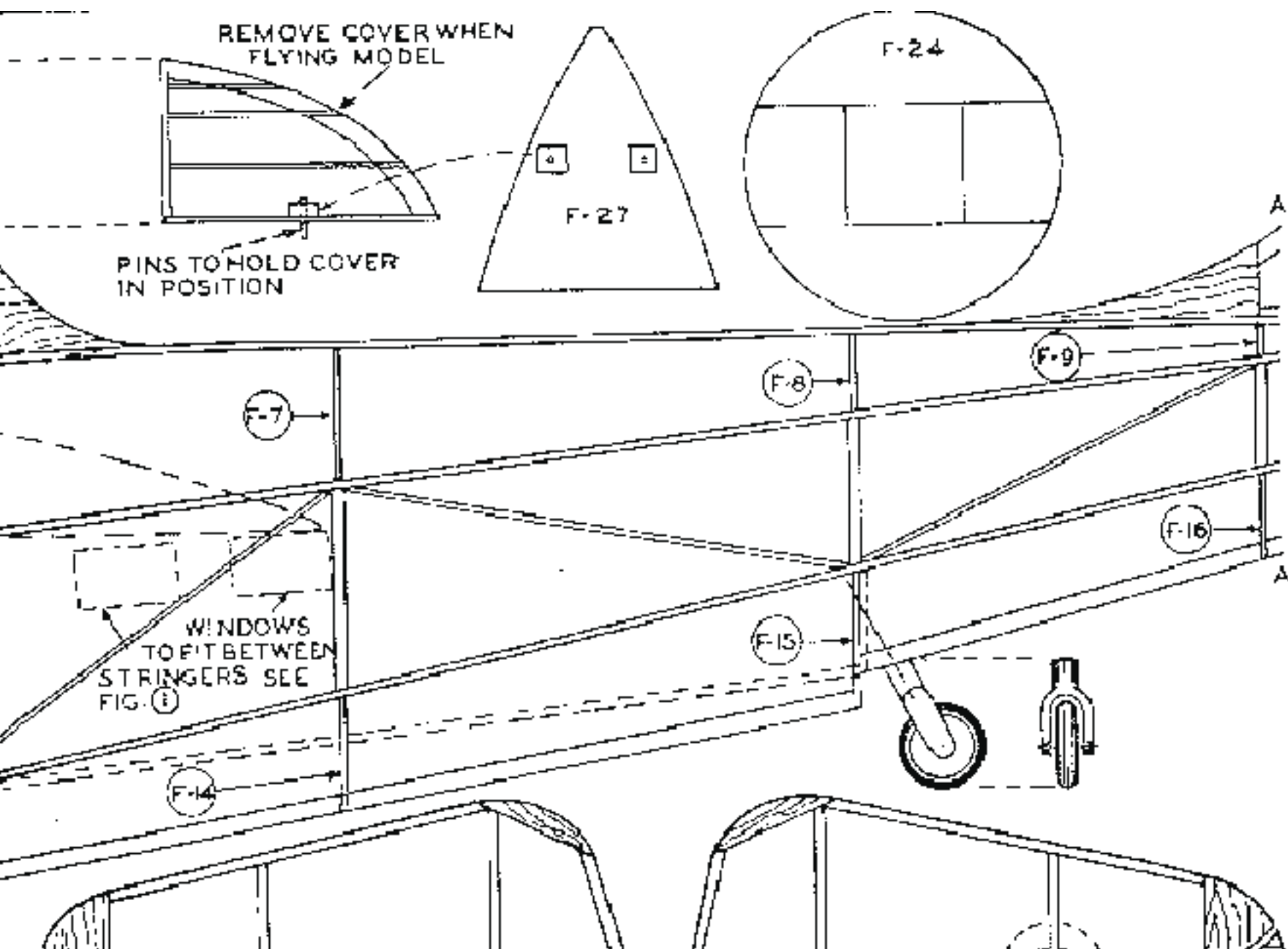


NOTE

COMPLETE FUSELAGE
WITH STRINGERS STIFF
PAPER ETC. THE SPACE
TO RECEIVE REMOVABLE
HATCH IS NOW CUT OUT
HATCH COVER MAY
NOW BE BUILT TO
FIT

SOLID BALSA





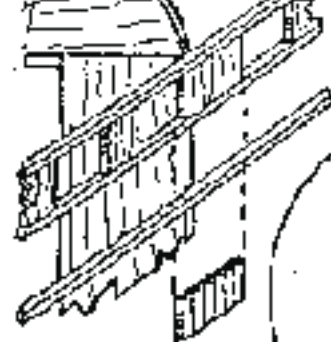
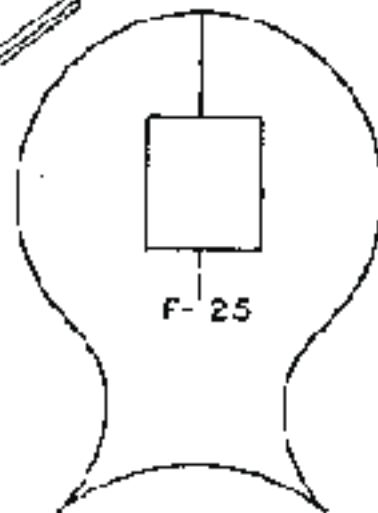
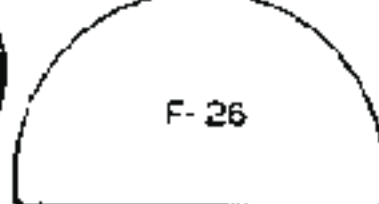


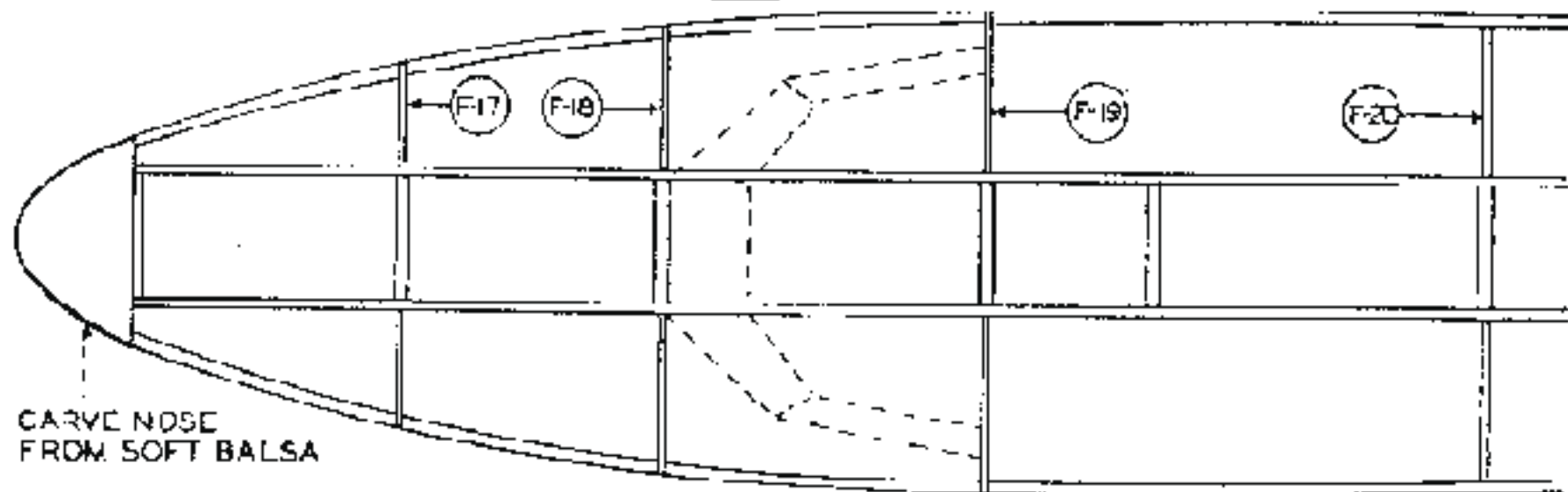
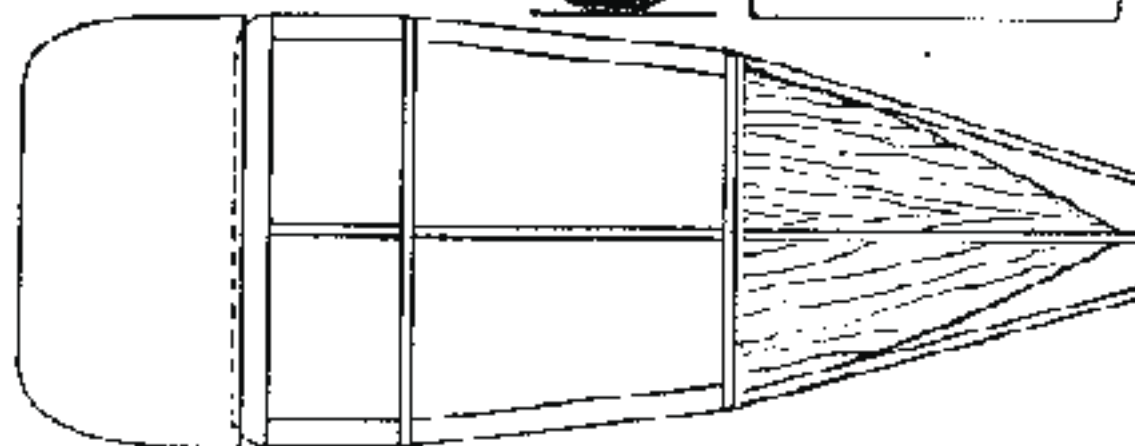
FIG. (1)



F-25



F-26



CARVE NOSE
FROM SOFT BALSA

