

X 5

1/4 Spruce L E

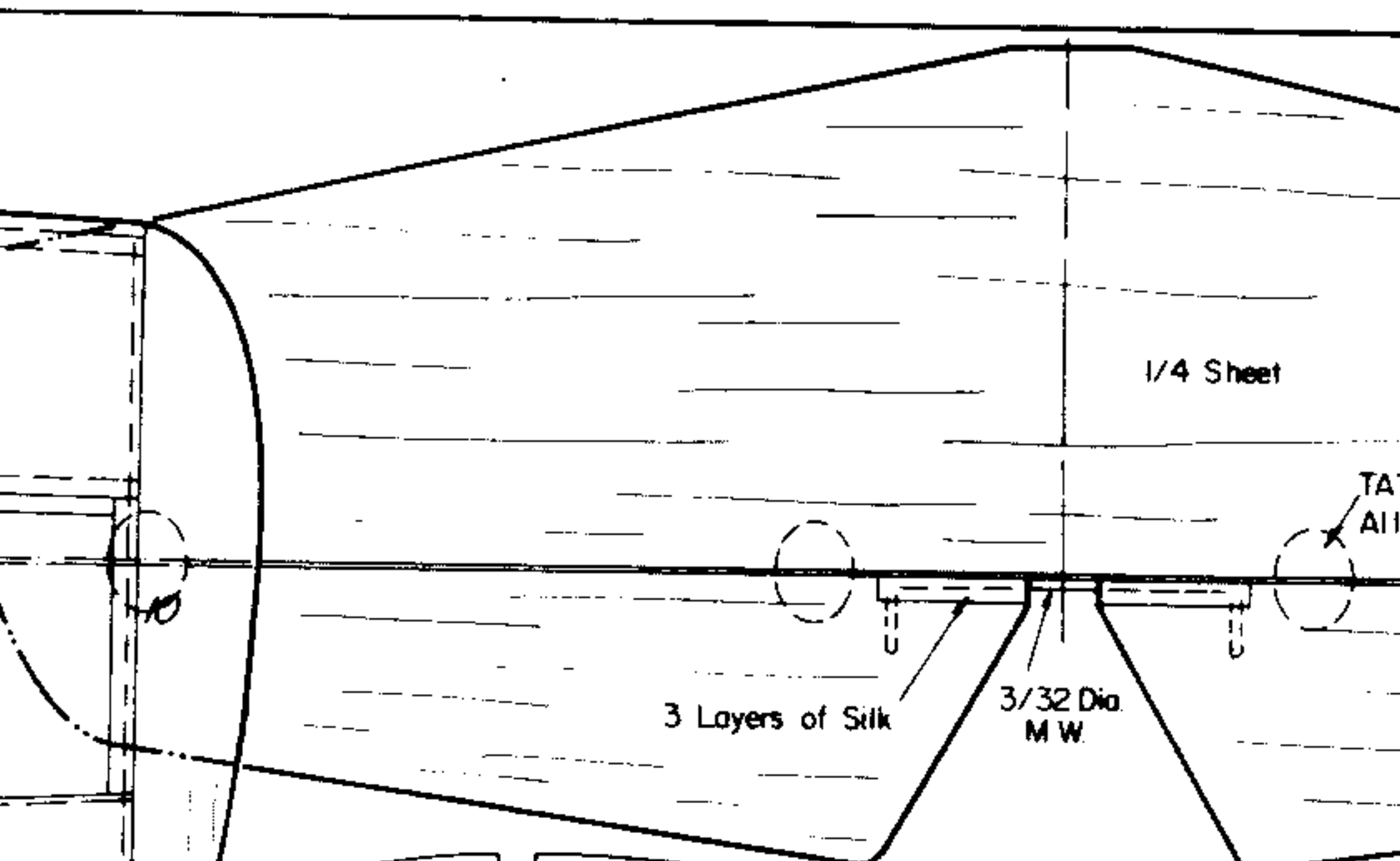
1/16 Sheet
Top & Bottom

5
1/4 x 3/8 Top &
Bottom

6
1/16 Capstrips

8

9



1/4 Sheet

3 Layers of Silk

3/32 Dia.
M.W.

TA'
All

STONE Hinges
Surfaces

3/32 M.W.
Aileron Horn

3/32 I.D. Brass Tubing

1A
1/4 Balsa

1/16 Ply

1/16 Ply

1/2 Thk. Maple

1/4 Sq. T.E.

3

1/16
Ply

Epoxy 1/16 Ply
Doublers on Ribs 1,2&3

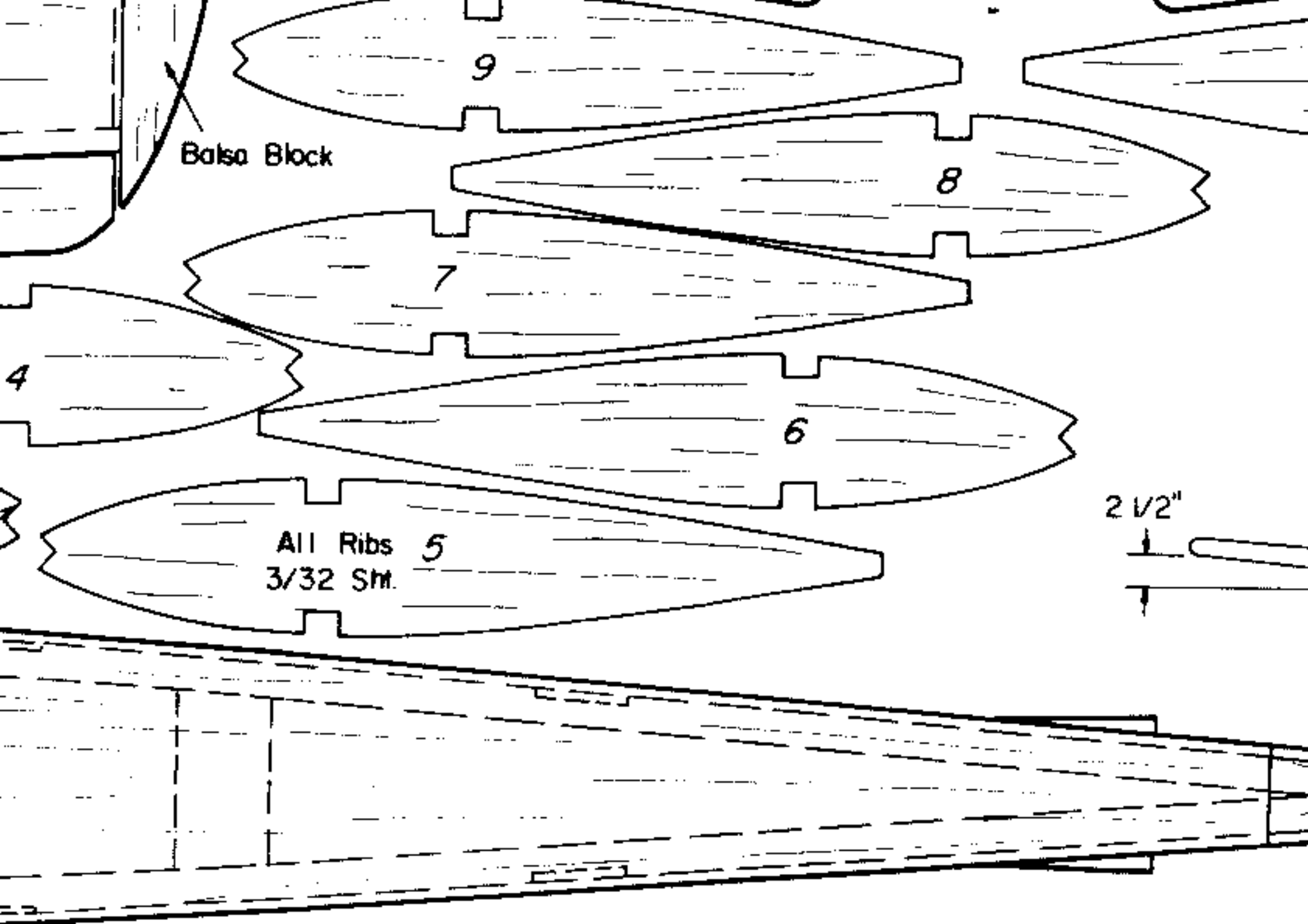
1/16 Ply

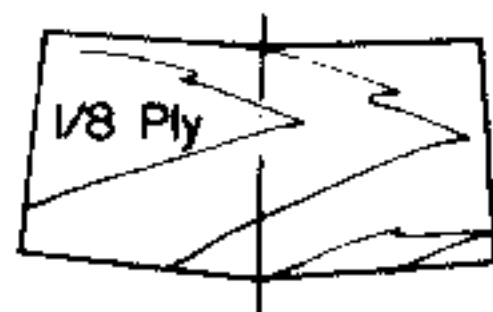
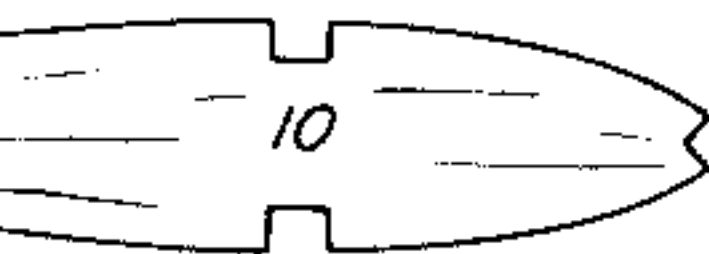
2

1/16
Ply

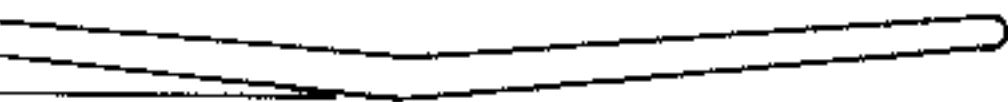
2

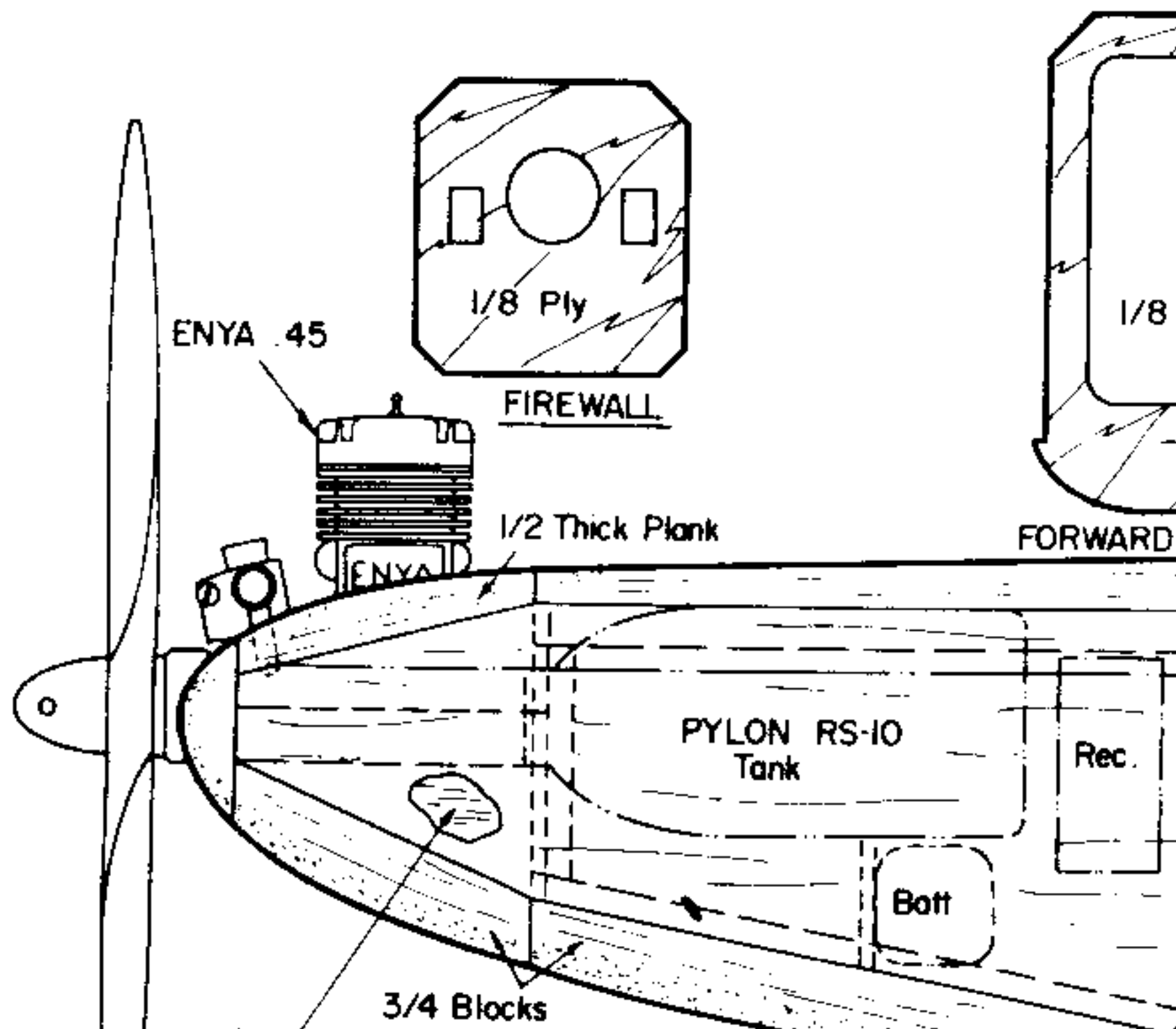
2

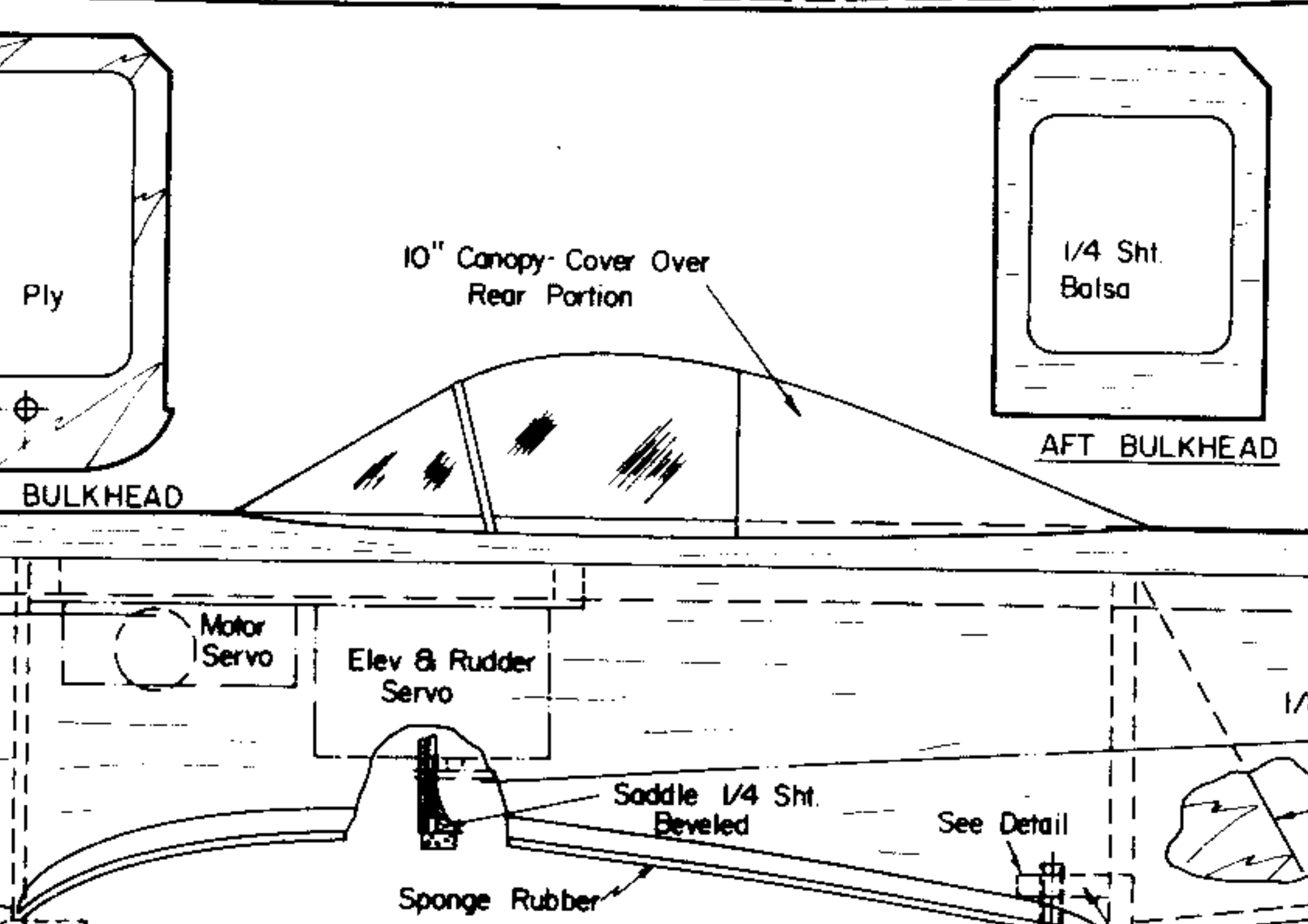


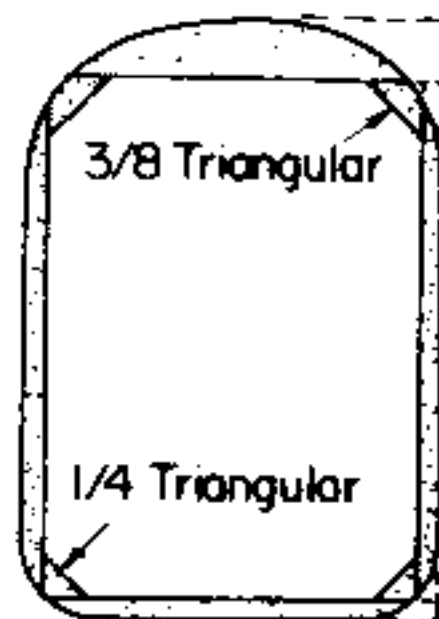


DIHEDRAL BRACE









Carve Corners

SECTION A-A

1/2 Thick Balsa

A

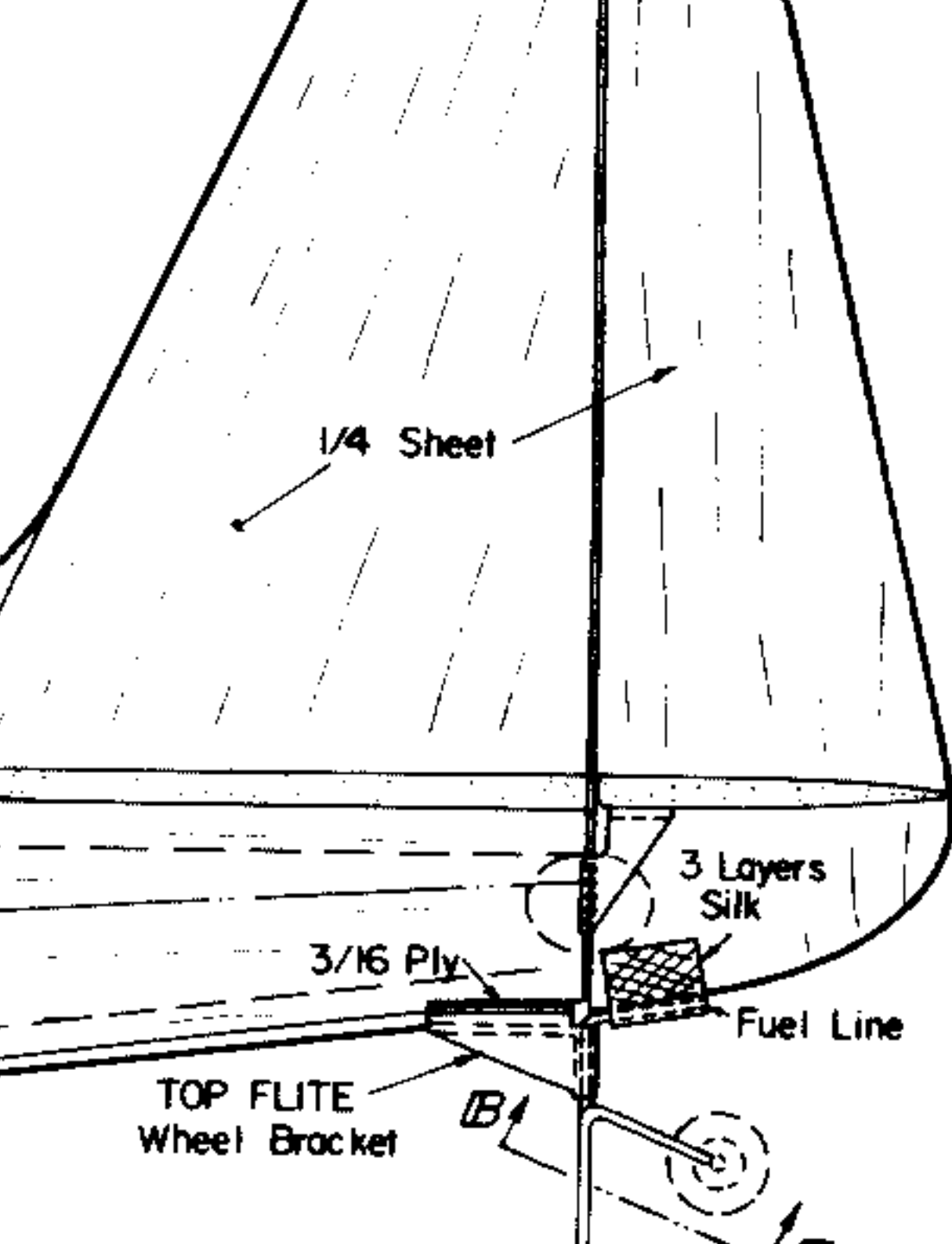
8 Sht. Sides

1/16 Ply Doubler
Forward To Nose
Block

Push Rod

3/32 Sht.

1/8 Sht.

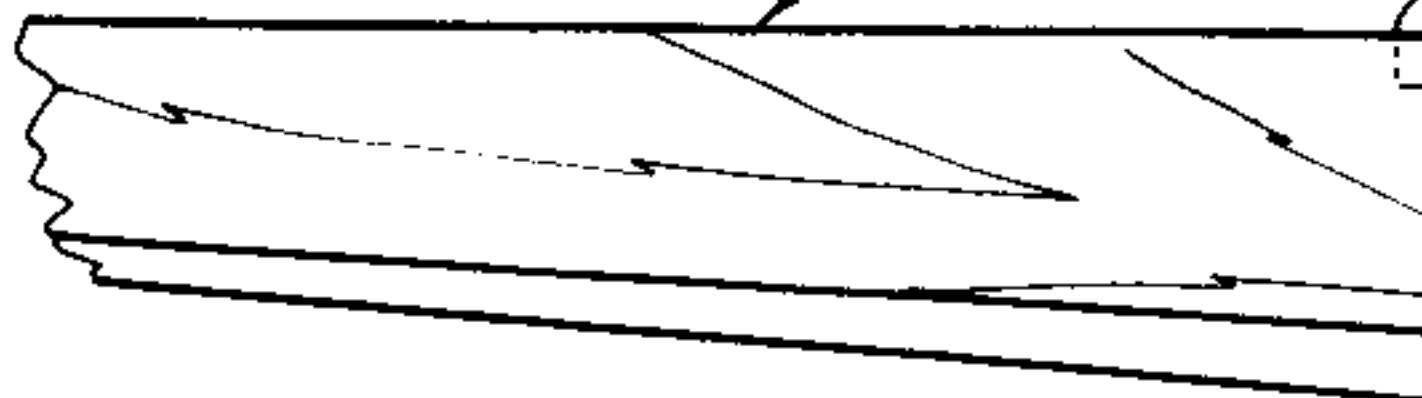
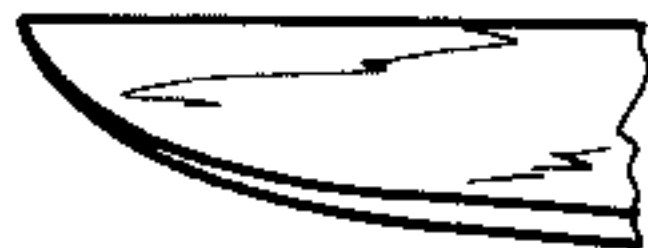


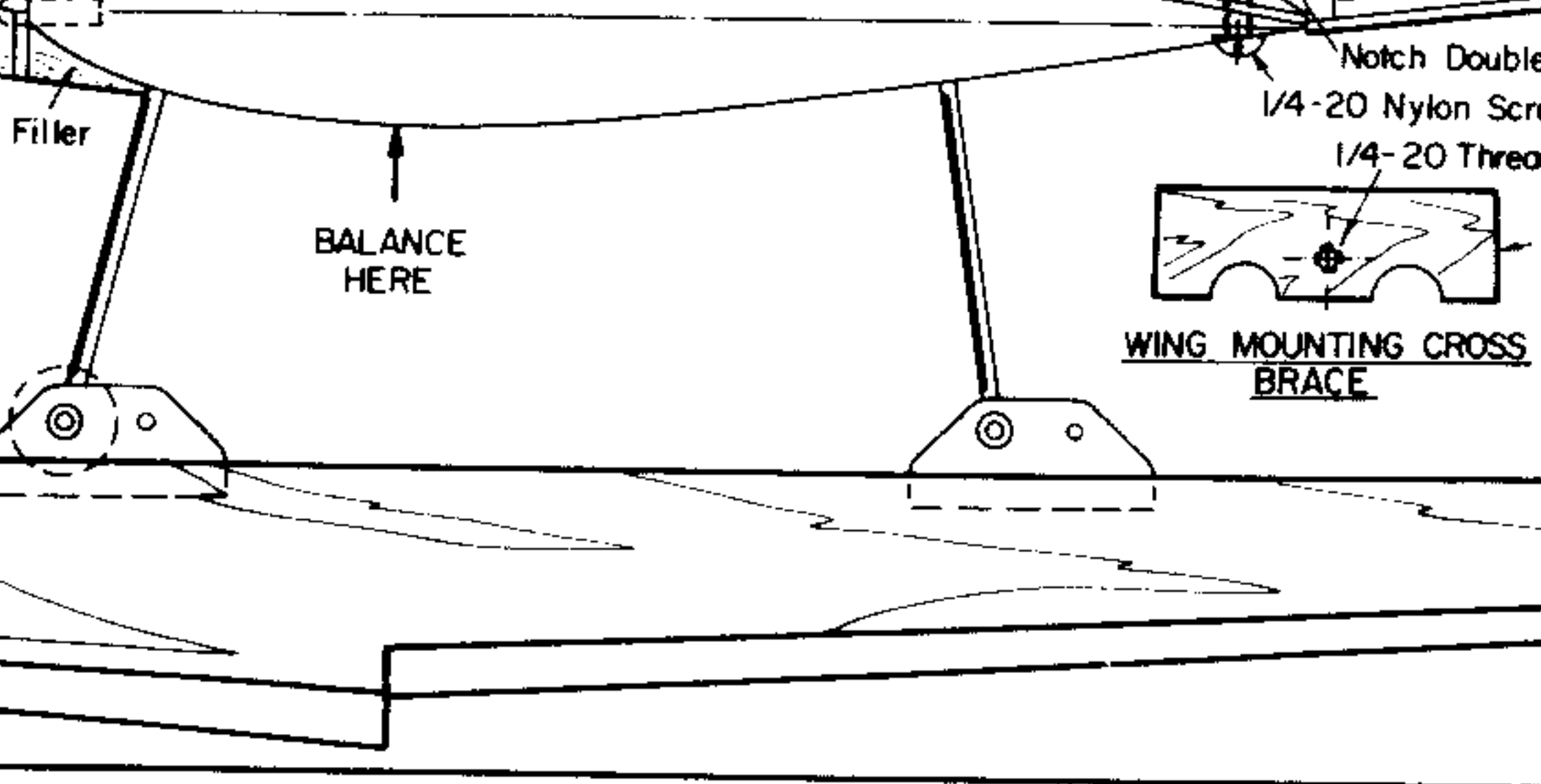


1/4 Sht.

GUSSETS
(2 - Req'd)

"AQUA LIFTS" Foam Core Floats





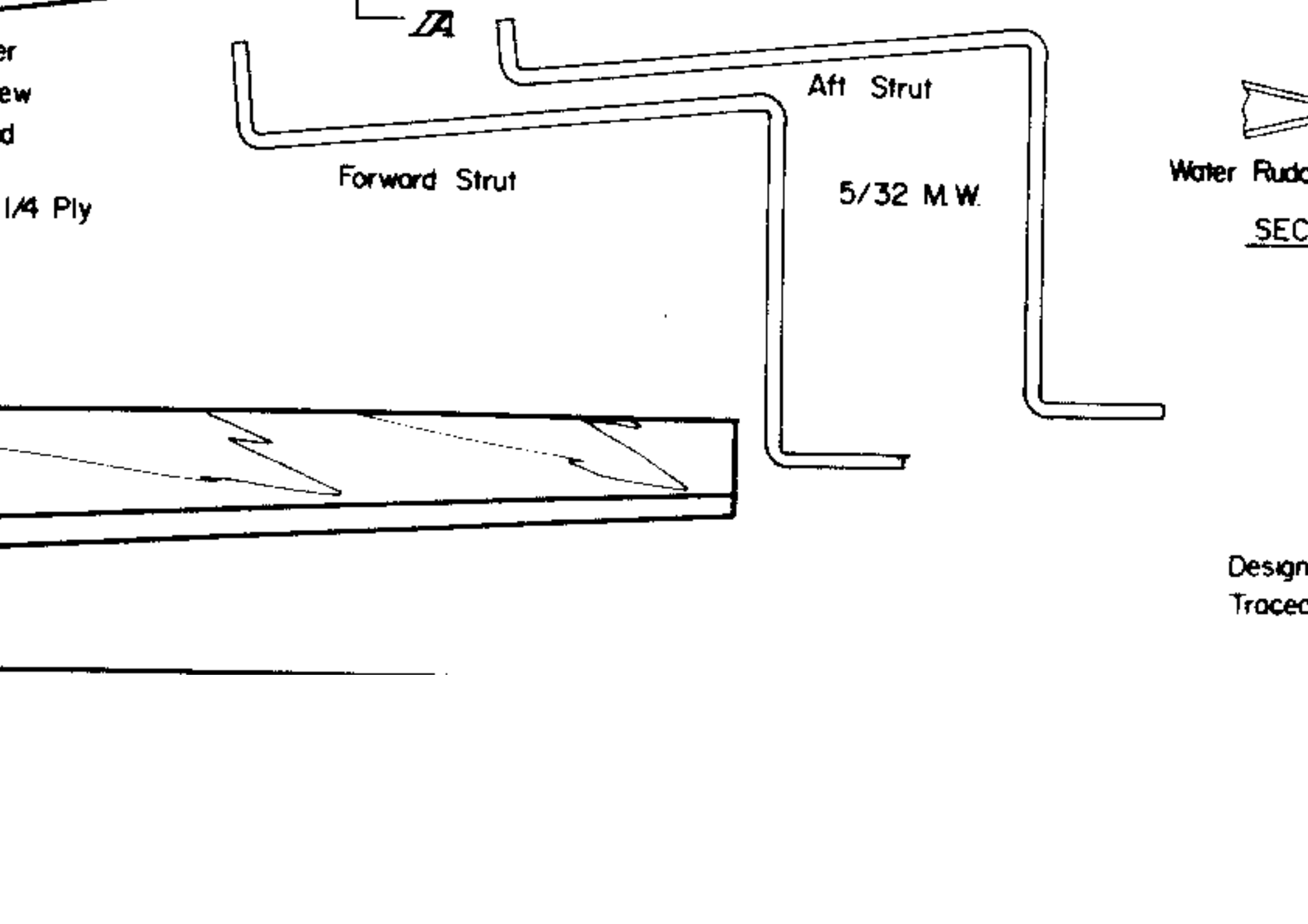
Filler

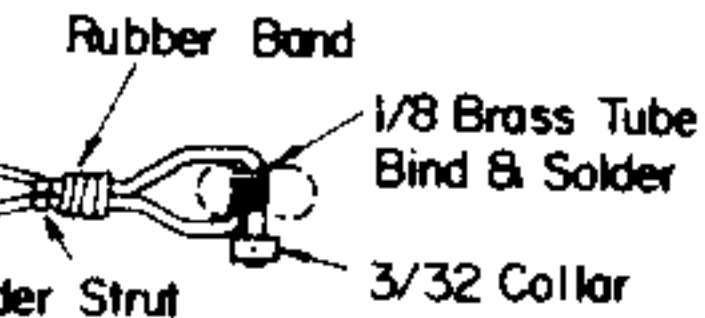
BALANCE
HERE

Notch Double
1/4-20 Nylon Scre

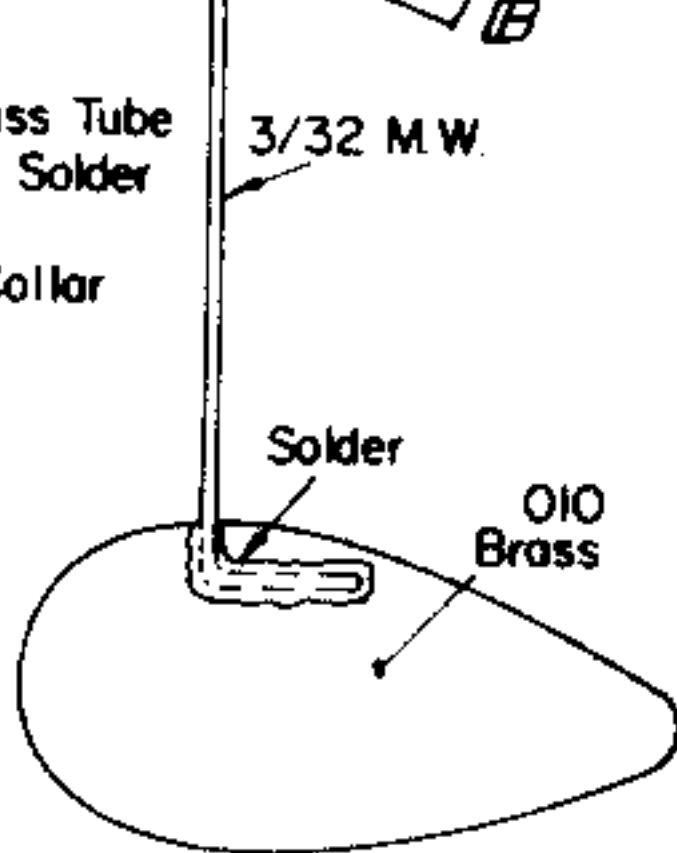
1/4-20 Threo

WING MOUNTING CROSS
BRACE





SECTION *IB-IB*



designed by GENE ROGERS
built by Al Novotnik