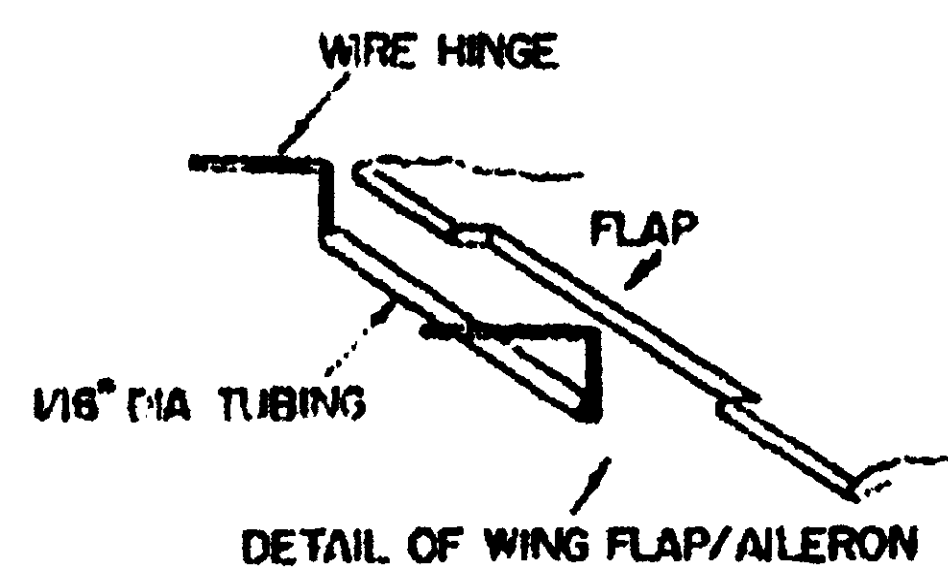
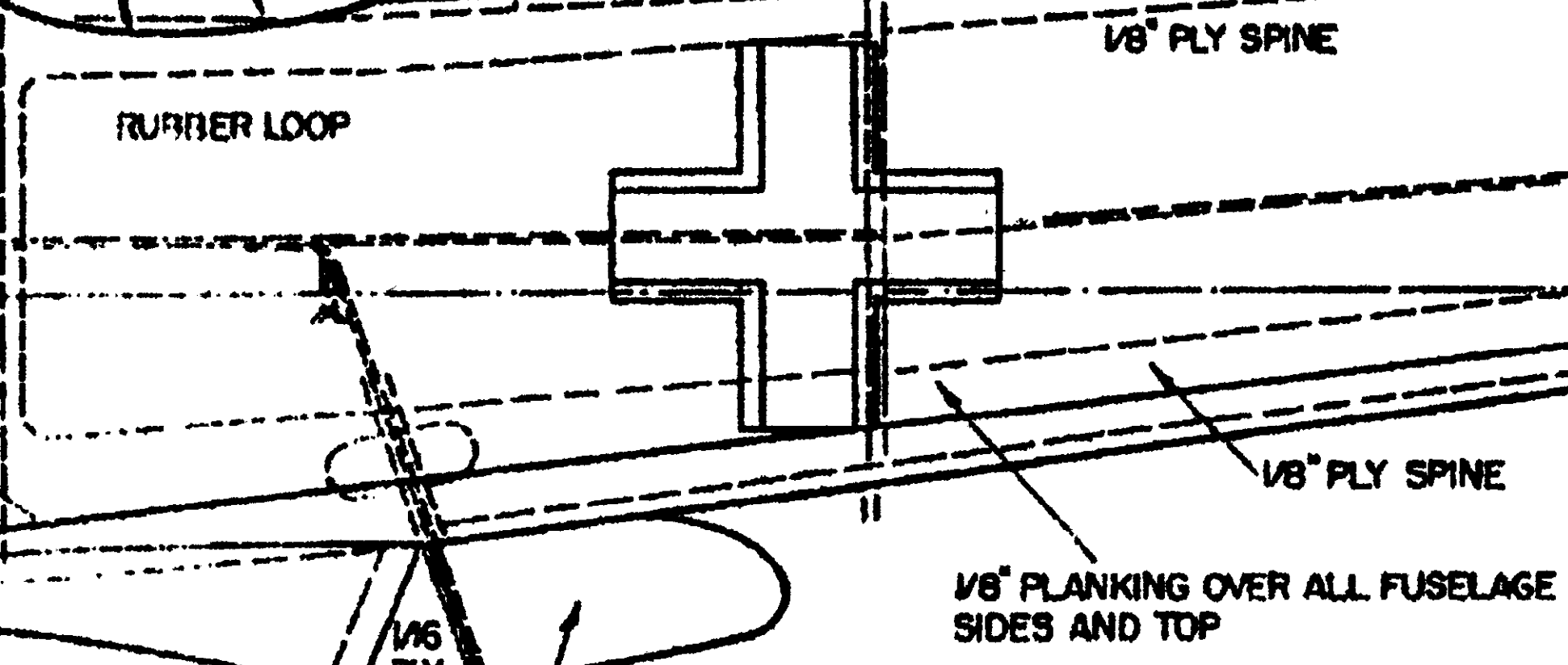


KEEP REAR STRONG, BUT LIGHT. CENTER OF GRAVITY
SHOULD BE AT BULKHEAD 7. SHIFT R.C. AND BATTERIES
TO OBTAIN THIS

GIVE HULL TWO COATS OF CLEAR VARNISH - WING ONE COAT



COVER HOLE WITH OIO PLASTIC



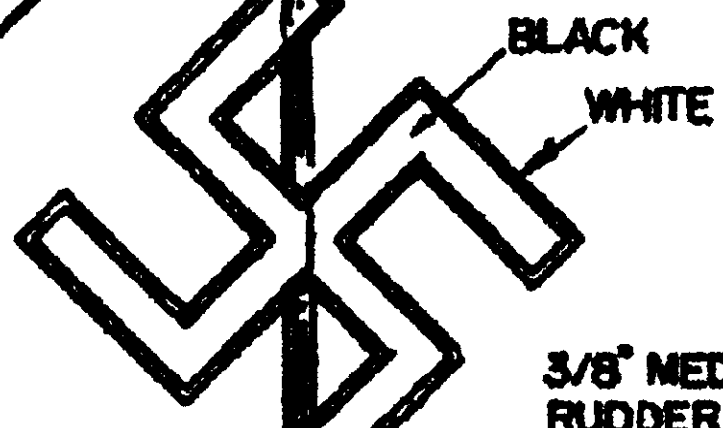
TYPICAL CAMOFLAGE LINES

BREAK LINE

FAIRING BLOCKS

RUDDER CONTROL ROD

20 SWG WIRE STRUTS, LOOPED ENDS
BOLTED TO PLY SPINE USING 6 BA BOLTS
3/32" Balsa FAIRING



WHITE CIRCLE
BLACK SWASTIKA
CIVIL MARKING

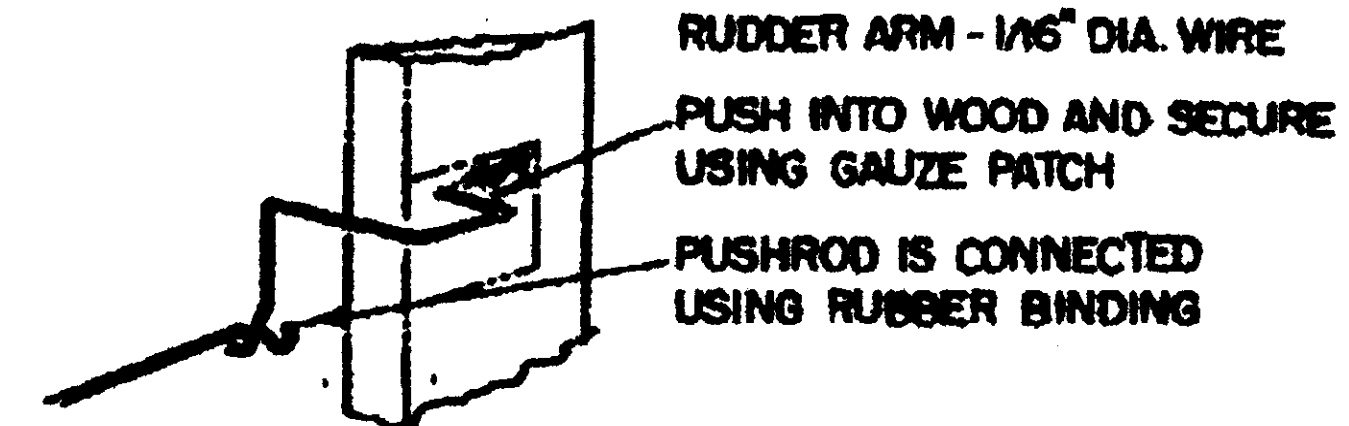
CUT OUT SLOT

SOFT BLOCK FAIRINGS

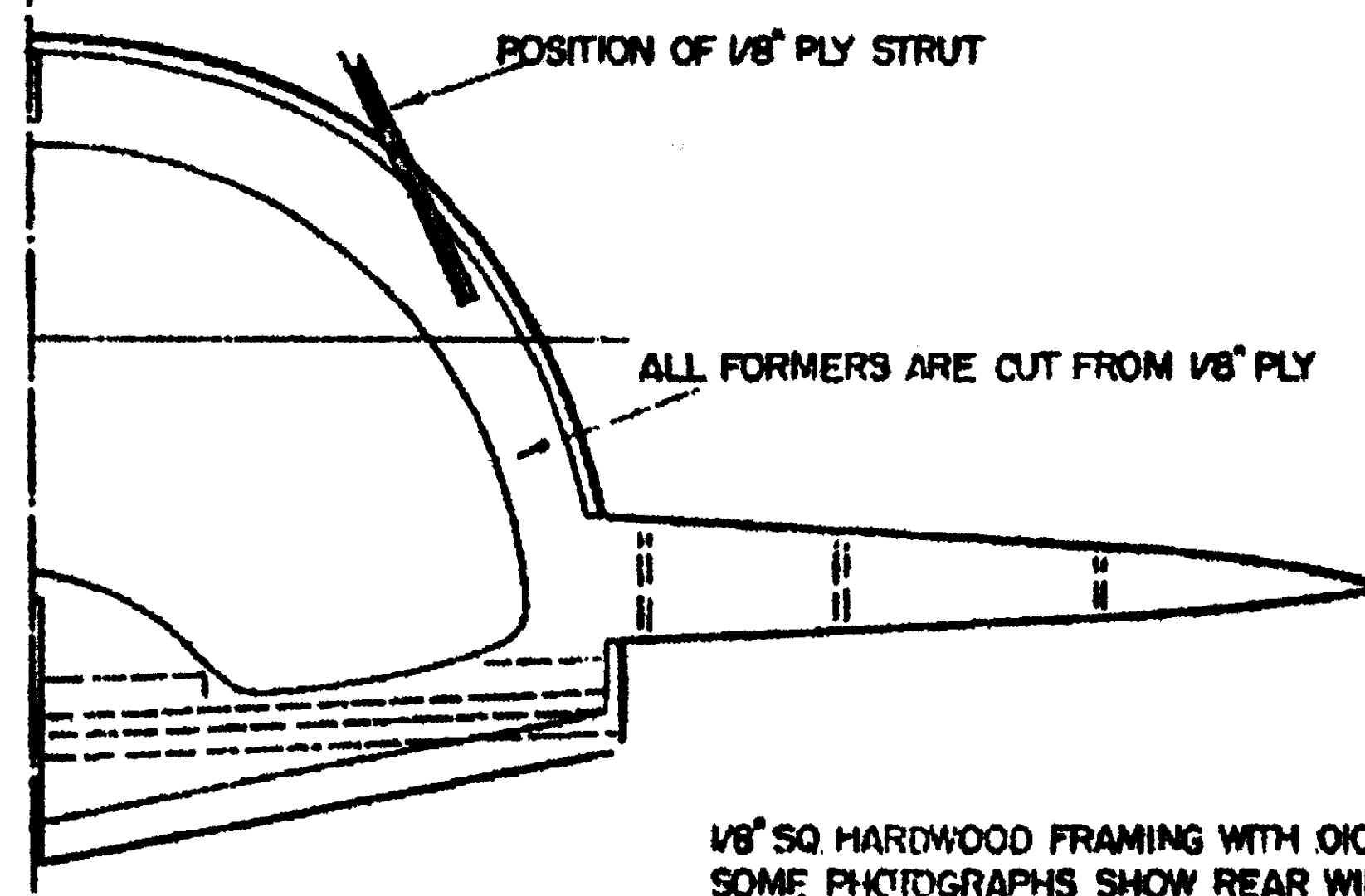
13

3/16" DIA. DOWELS FOR TAILPLANE
HOLD DOWN RUBBER BANDS

CUT HOLES IN END FORMERS TO
LEAD THROUGH CONTROL RODS

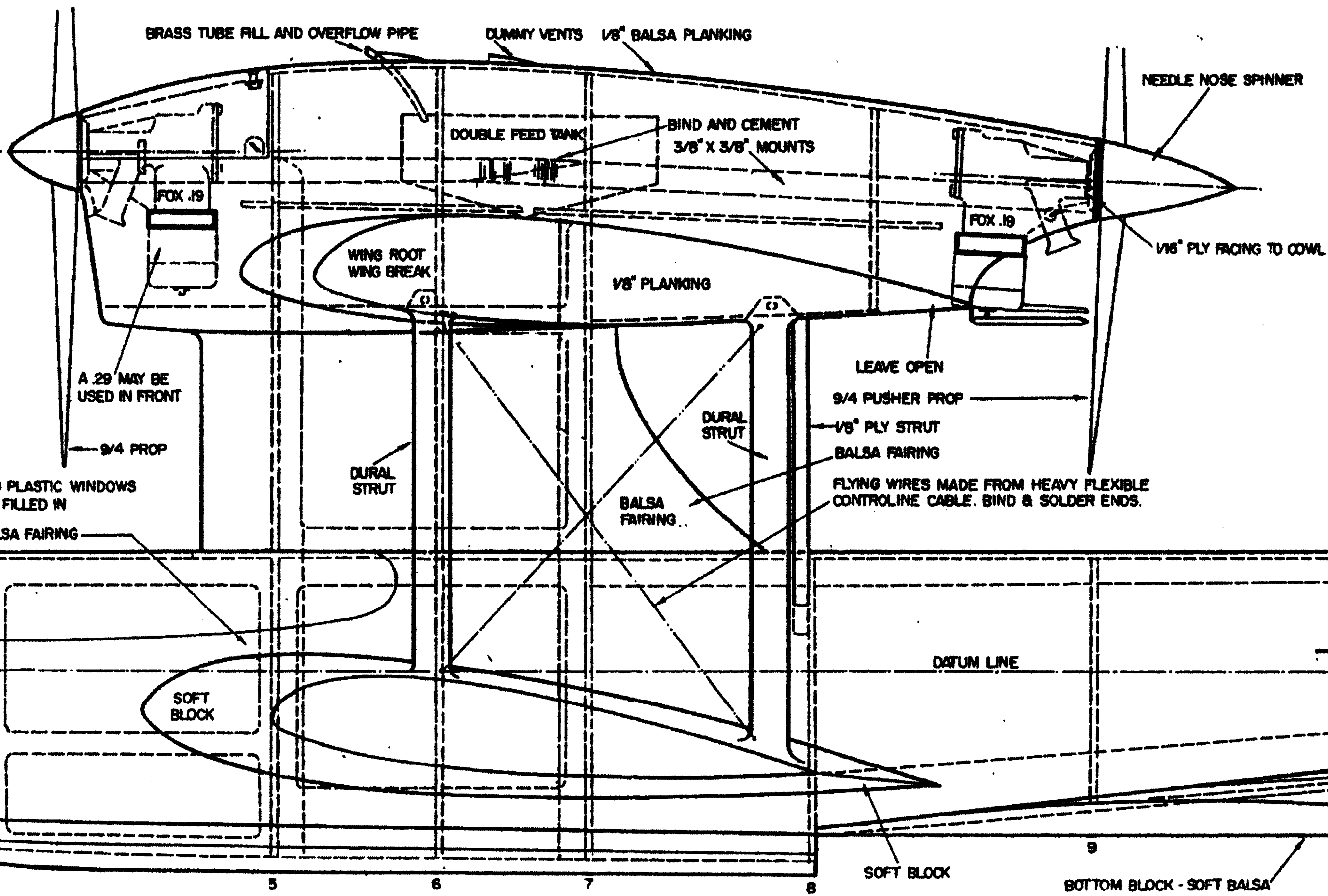


.010 SHIM BRASS RUDDER WRAPPED
WITH 1/16" DIA. WIRE AND SOLDERED
LEAD WIRE THROUGH BRASS TUBE
WHICH IS SOLDERED TO BRACKET
AND BOLTED TO PLY SPINE.



1/8" SQ HARDWOOD FRAMING WITH OIO / O30 PLASTIC WINDOWS
SOME PHOTOGRAPHS SHOW REAR WINDOW FILLED IN

SOFT Balsa FAIRING



1/16" PLY BATTERY BOX

Balsa NOSE BLOCK

1/4" THICK VERY HARD
Balsa PLANKING SURFACE

SOFT BLOCK WEDGES CEMENTED TO
PLANKING BOTTOM