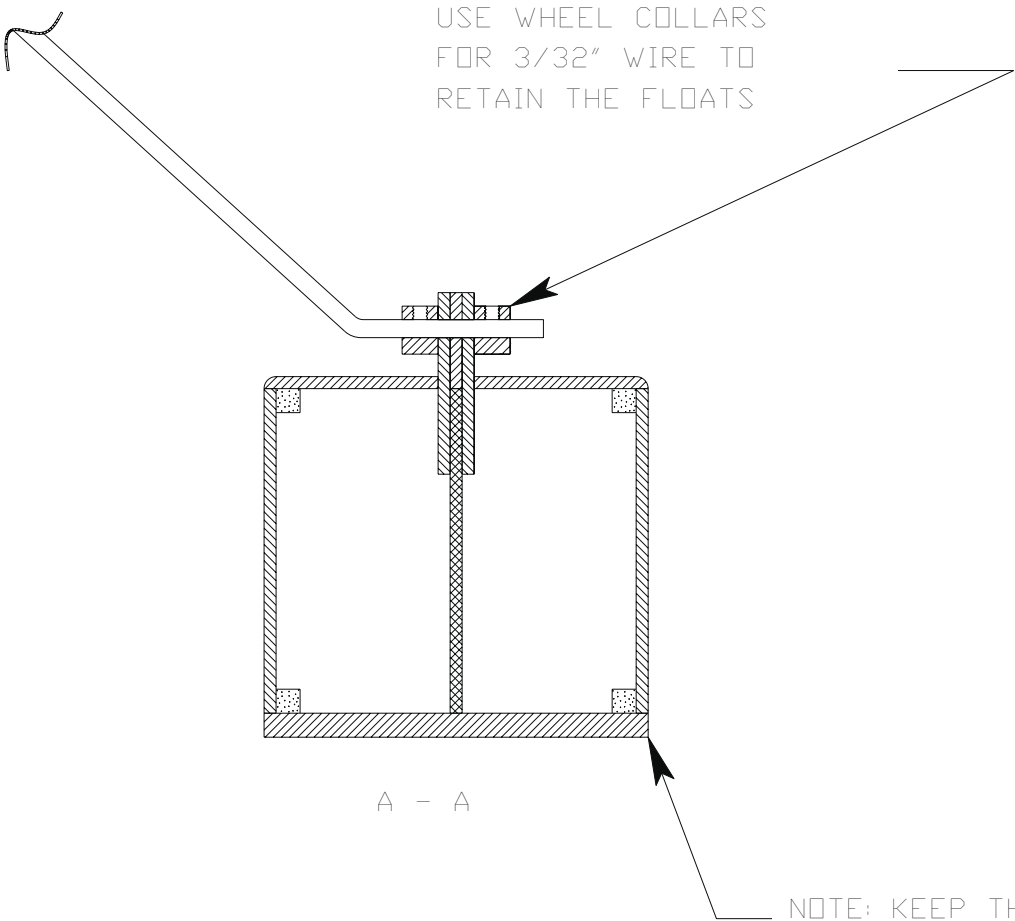
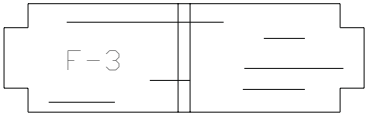
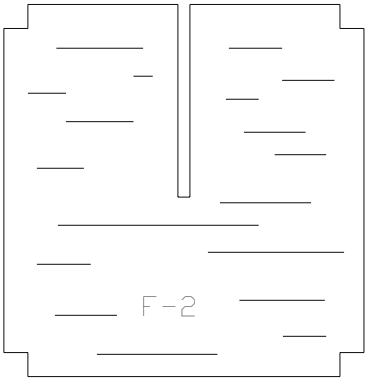
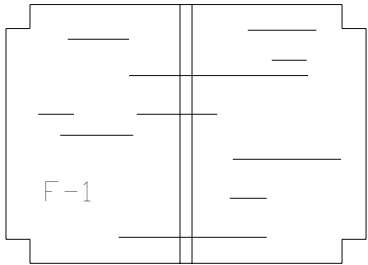
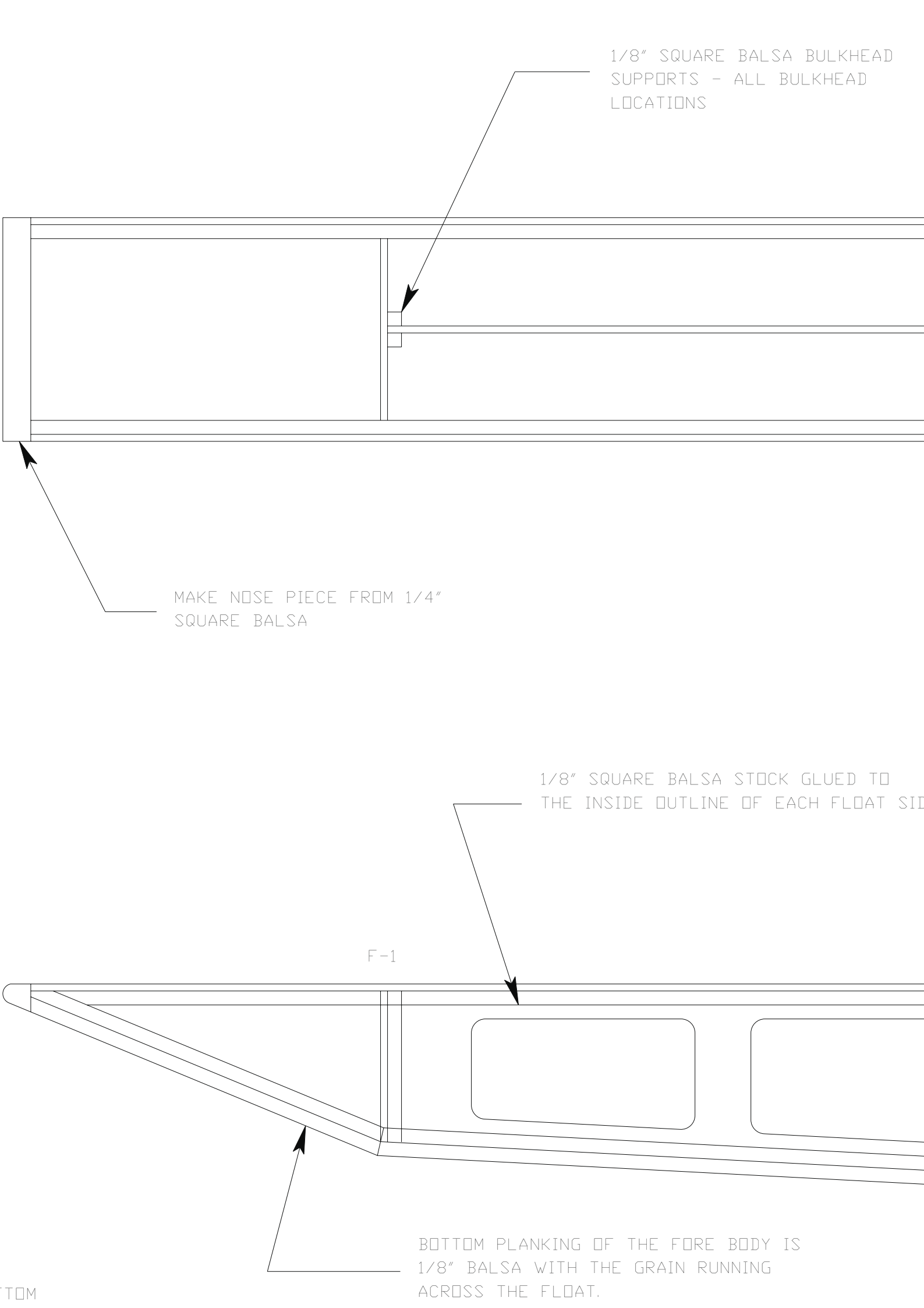
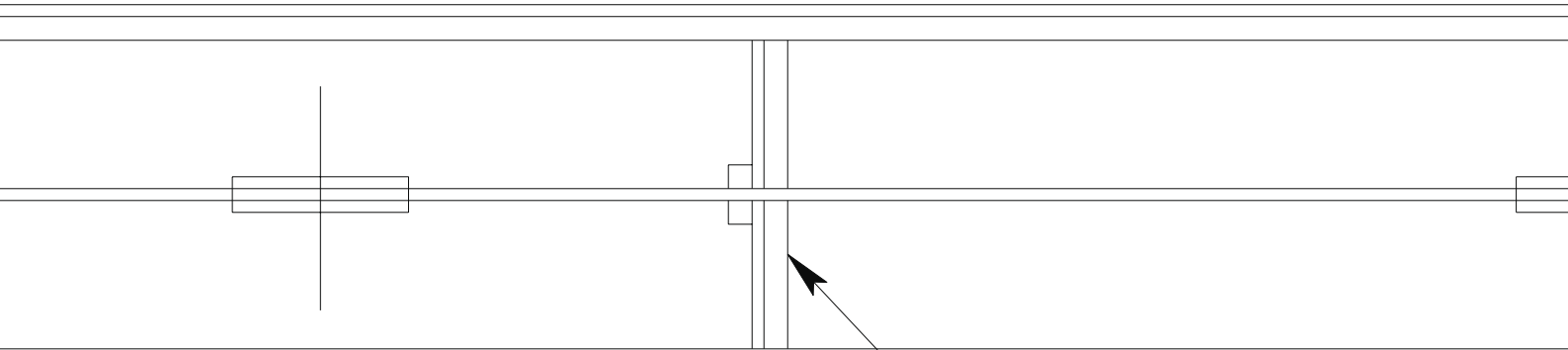


MAKE TWO SETS OF THE FLOAT
BULKHEADS FROM 1/16" Balsa



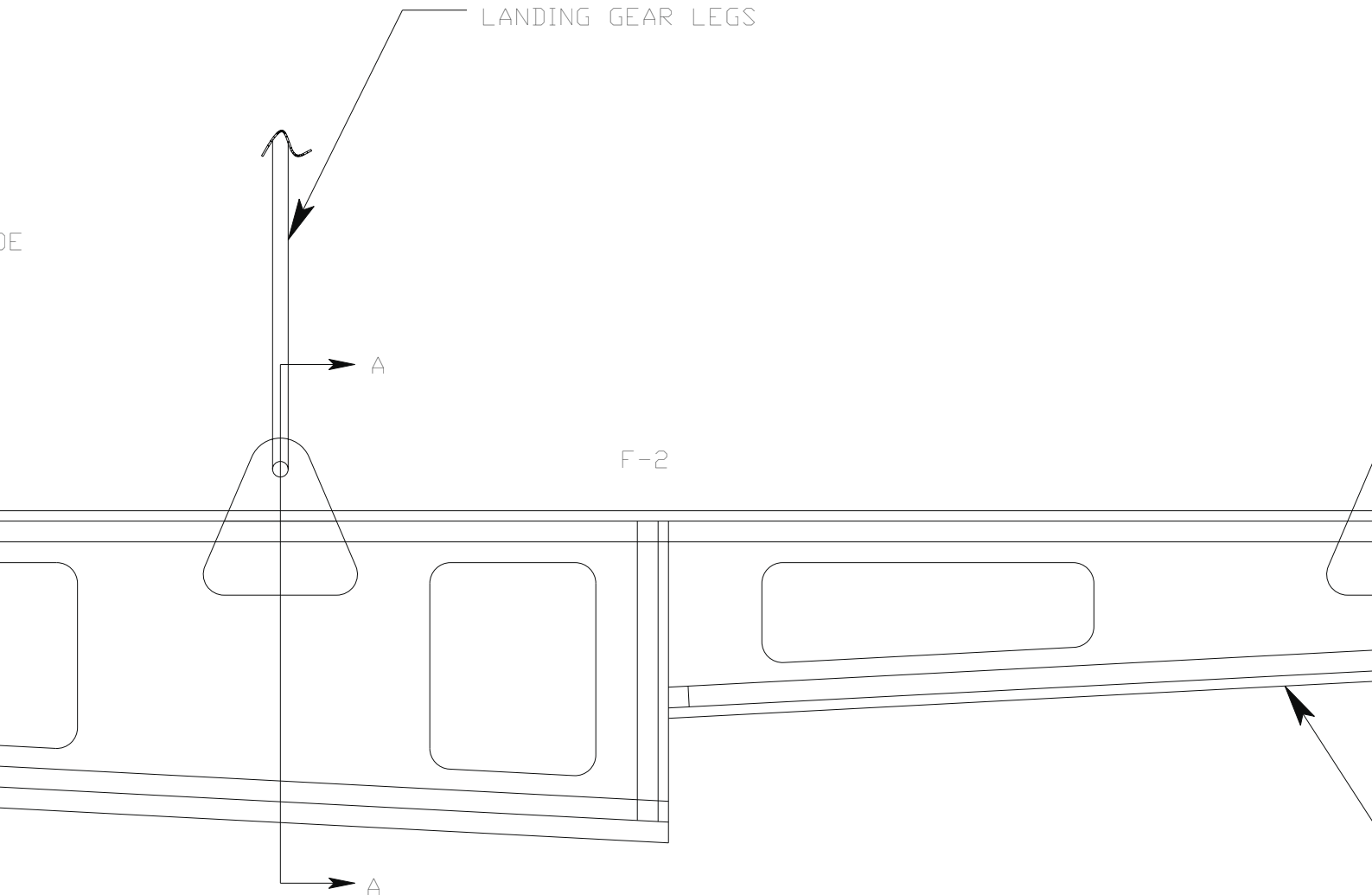


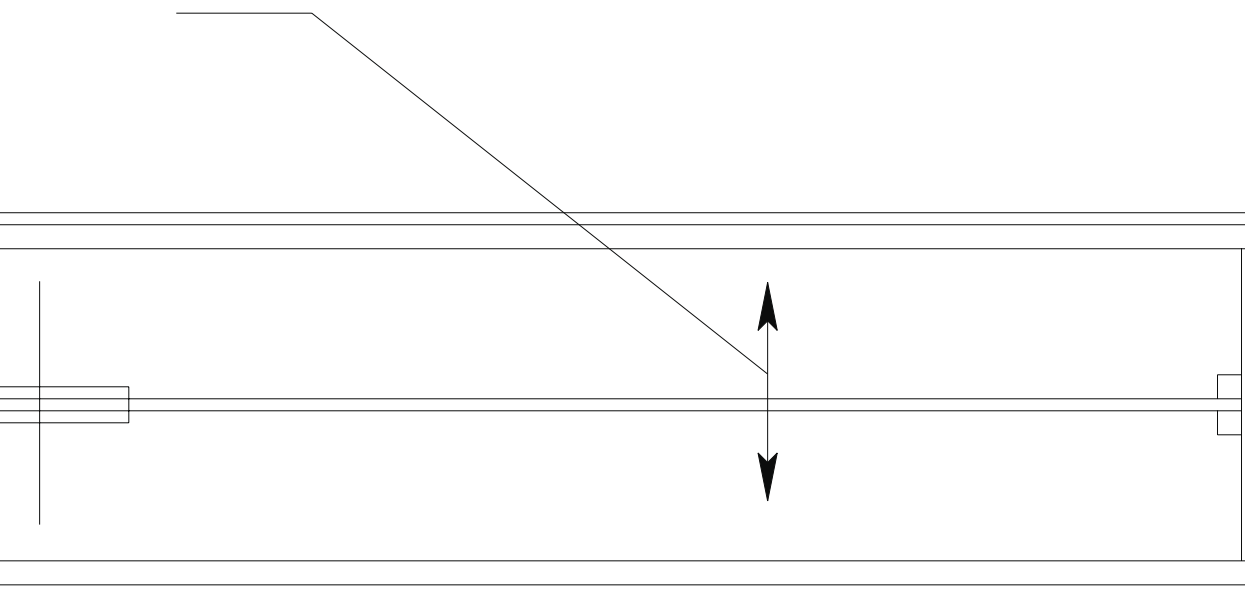
TOP PLANKING IS 1/16" Balsa WITH THE GRAIN
RUNNING ACROSS THE FLOAT - TOP SHEETING NOT
SHOWN FOR CLARITY



1/8" SQUARE Balsa CROSS P
AT THE BOTTOM OF THE STEP

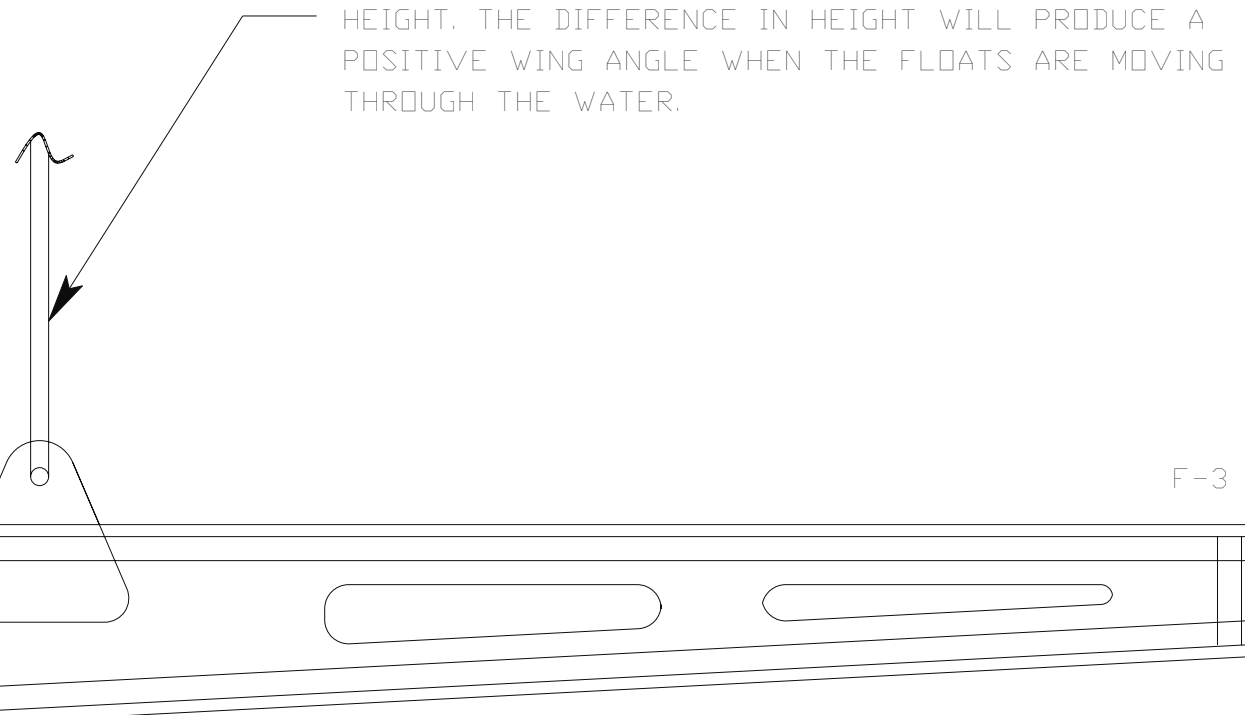
EXISTING 3/32" MUSIC WIRE
LANDING GEAR LEGS



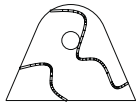


PIECE
P

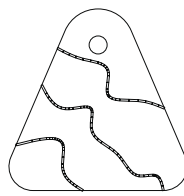
MAKE THE REAR SUPPORT FROM $\frac{3}{32}$ " MUSIC WIRE.
BEND TO GIVE THE SAME SPAN AS THE EXISTING
LANDING GEAR LEGS, BUT $\frac{1}{4}$ " LESS VERTICAL
HEIGHT. THE DIFFERENCE IN HEIGHT WILL PRODUCE A
POSITIVE WING ANGLE WHEN THE FLOATS ARE MOVING
THROUGH THE WATER.



BOTTOM PLANKING ON THE AFTER BODY IS $\frac{1}{16}$ "
BALSA WITH THE GRAIN RUNNING ACROSS THE
FLOAT.

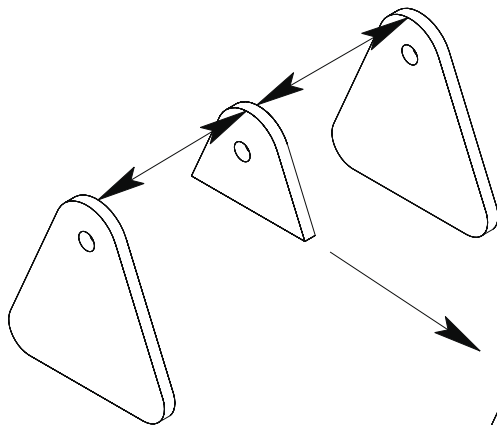


MAKE 4

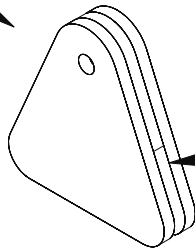


MAKE 8

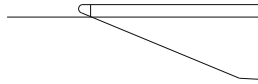
MOUNTING LUG PARTS ARE MADE FROM 1/16" PLYWOOD - USE THE KEEL LIGHTING HOLE CUT OUTS AS A SOURCE FOR STOCK.

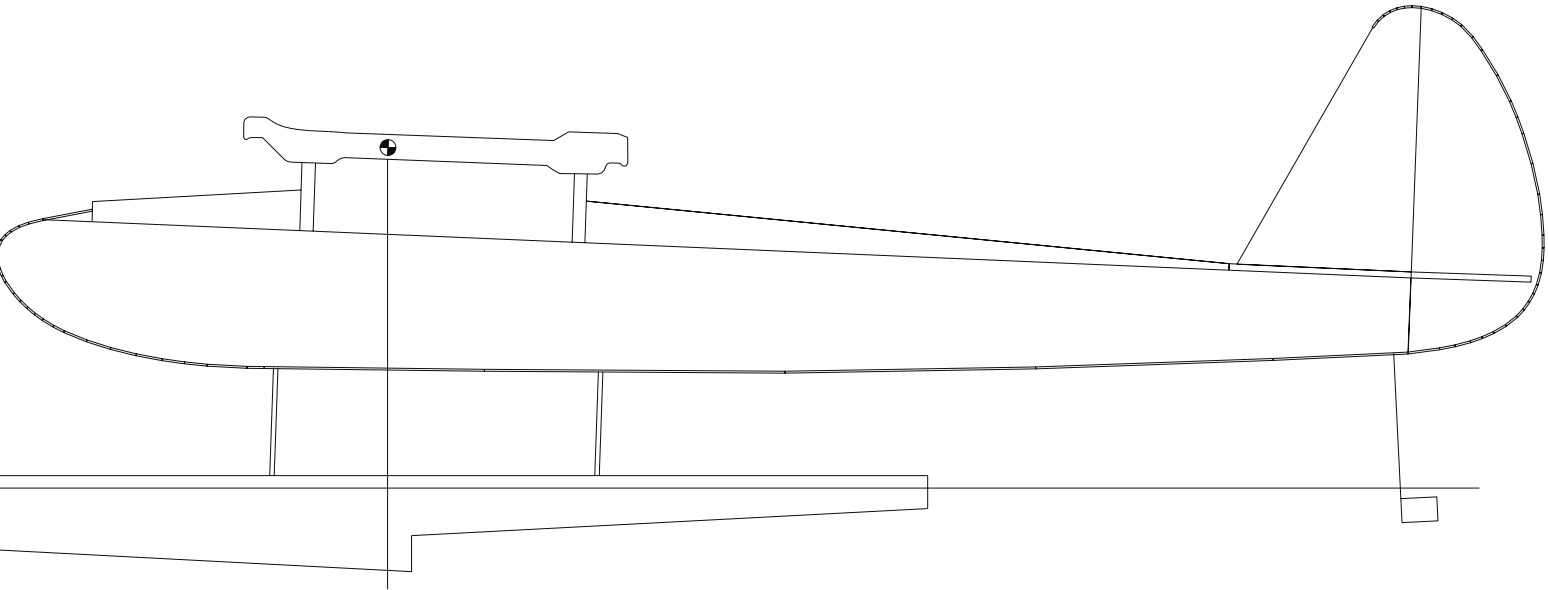
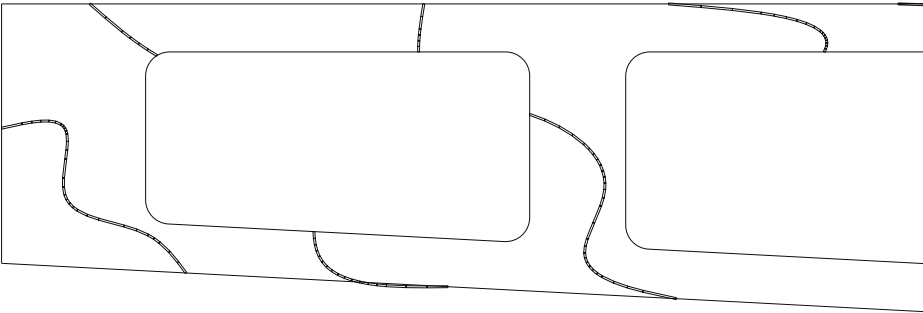
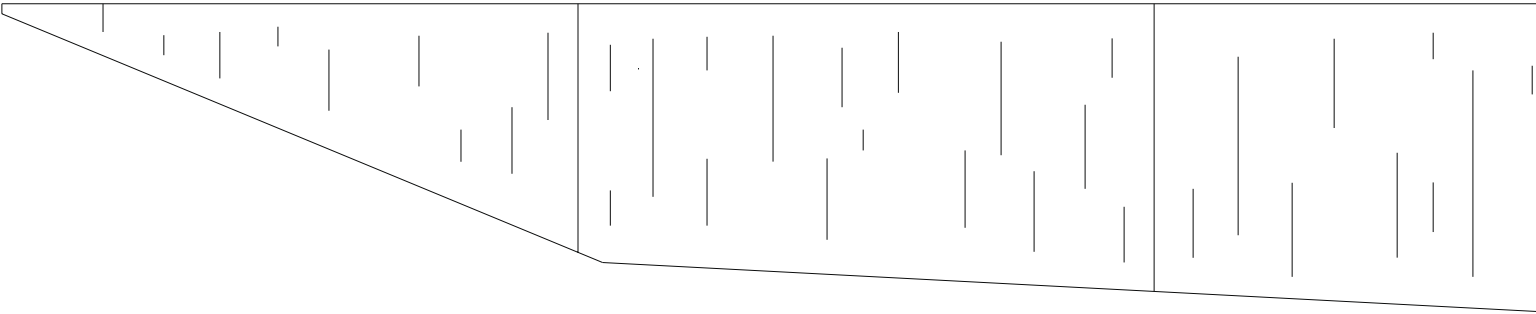


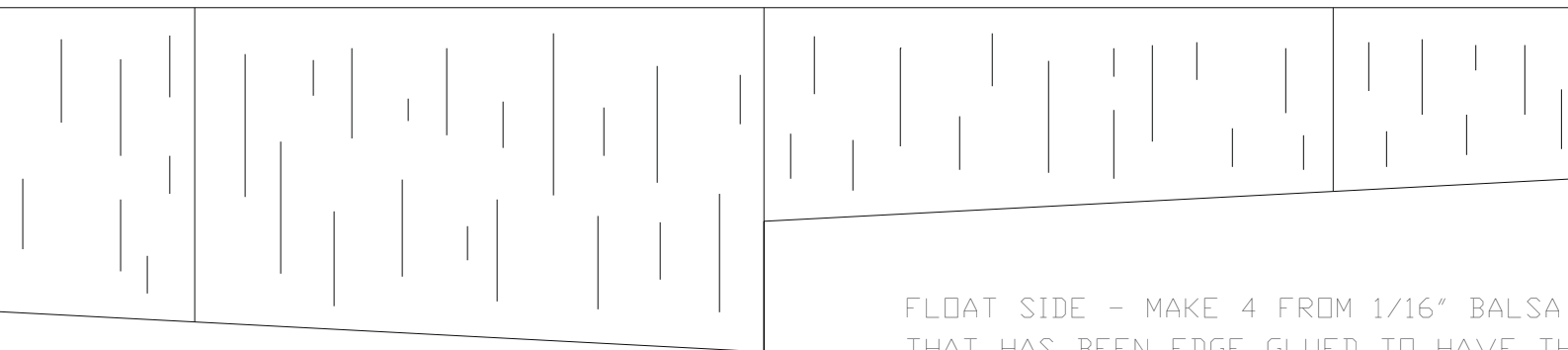
MOUNTING LUG ASSEMBLY



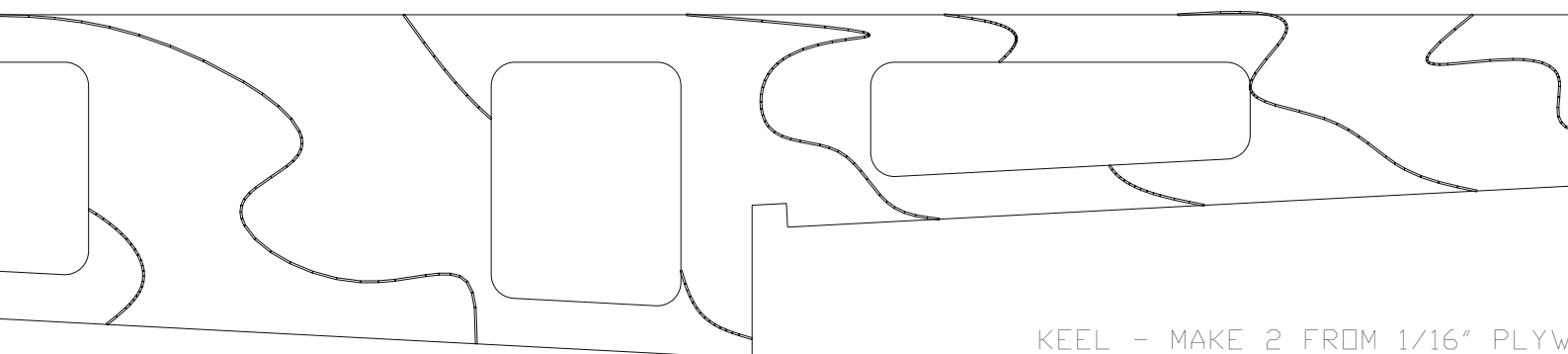
THE MOUNTING LUGS FIT OVER THE PLYWOOD KEEL IN THE INDICATED LOCATIONS. GLUE IN PLACE BEFORE APPLYING THE TOP PLANKING.







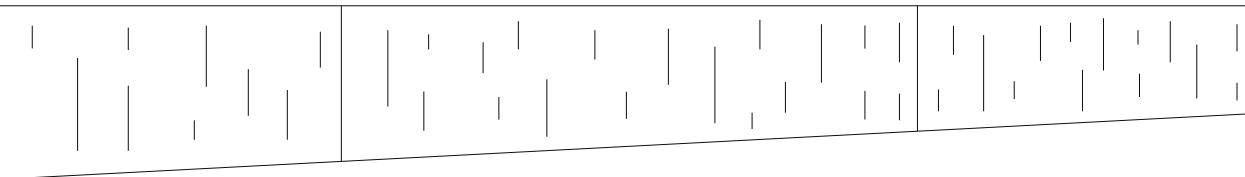
FLOAT SIDE - MAKE 4 FROM 1/16" BALSAM THAT HAS BEEN EDGE GLUED TO HAVE THE GRAIN RUN VERTICAL



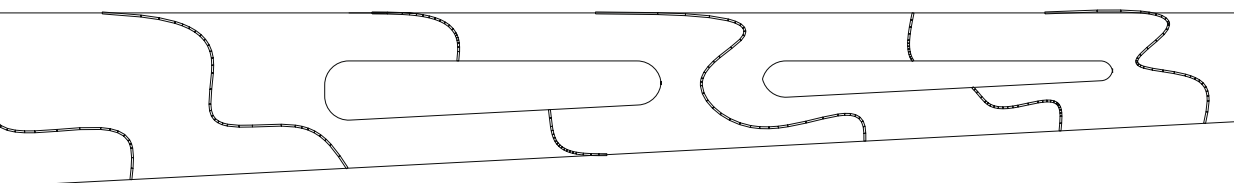
KEEL - MAKE 2 FROM 1/16" PLYWOOD

GENERAL ARRANGEMENT OF THE FLOAT INSTALLATION. USE A SECOND DUBRO TAIL WHEEL ASSEMBLY FOR THE WATER RUDDER. BEND THE "TILLER" TO MATCH THE TAIL WHEEL ARRANGEMENT. THE WATER RUDDER SHOULD EXTEND TO JUST BELOW THE WATER LINE WHEN THE MODEL IS FLOATING ON THE WATER. THIS WILL BE ABOUT 3.5". THE SIZE OF THE WATER RUDDER SHOULD BE AROUND 1/2" X 3/4". A GOOD MATERIAL FOR THE WATER RUDDER IS 1/16" PLYWOOD.





HE



WOOD

AIL

T

FLOATS FOR THE SR BATTERIES CUTIE

Designed and Drawn by Paul Bradley

April 2002